



fantini

DIGITAL NATURE

ABET LAMINATI 

Unlimited selection

DIGITAL NATURE DEPICTS BIOMORPHIC GEOMETRY THAT STRADDLES BOTH THE NATURAL WORLD AND THE CONSTRUCTS OF MATHEMATICS. INSPIRED BY NATURE, LIKE A RIPPLING WAVE UNDULATING GENTLY IN A CONNECTED DIGITAL AGE, OR A BEAUTIFUL VIBRATION OF SOUND, A CONTINUUM OF ENERGY. THE PATTERNS ARE A BREATH OF LIFE THAT HAS COME FROM THE UNIVERSE, COMPLEX FORMS THAT ARE BETWEEN THE EARTH, THE ARTIFICIAL, MYSTERY AND HARMONY.



**KARIM RASHID DISEGNA
LA NATURA DELL'ERA DIGITALE**

Abet Laminati presenta DIGITAL NATURE, la nuova collezione firmata Karim Rashid.

I dieci decorativi che la compongono, ciascuno declinato in tre alternative colore, investono la sfera emozionale per regalare esperienze sensoriali: in puro stile Rashid; la capacità dell'artista di descrivere visivamente anche i concetti più difficili e la sua particolare sensibilità rendono ogni creazione straordinaria, ma al tempo stesso accessibile e coinvolgente.

Ancora una volta questo designer visionario pluripremiato, tra i più significativi della sua generazione, riesce con abilità a mescolare materiale ed estetica per interpretare con originalità il nostro mondo e la natura che ci circonda, trasformandoli in una geometria che armonizza vero e artificiale.

Snow, Leaf, Icicles, Rain, Klouds, Waterfall, Krystal, Shell, Glacier raccontano attraverso sfumature, forme e intrecci di linee le possibili varianti degli elementi naturali, mentre Cities concentra nei tratti che si propagano in direzioni diverse in modo apparentemente caotico la dinamicità delle metropoli. Ogni variante concentra energia, ricercatezza stilistica e dinamicità per accendere la fantasia di chi guarda.

**KARIM RASHID DESIGNS
THE NATURE OF THE DIGITAL AGE**

Abet Laminati presents DIGITAL NATURE, the new collection designed by Karim Rashid.

The ten decors that compose it, each available in three colour alternatives, invest the emotional sphere to give sensory experiences: in pure Rashid style; the artist's ability to visually describe even the most difficult concepts and his particular sensitivity, make every creation extraordinary, but at the same time accessible and engaging.

Once again this award-winning visionary designer, one of the most significant of his generation, skilfully mixes materials with aesthetics to originally interpret our world and the nature that surrounds us, transforming them into a geometry that blends real and artificial.

Snow, Leaf, Icicles, Rain, Klouds, Waterfall, Krystal, Shell, Glacier tell us through shades, shapes and intricate lines the possible variations of natural elements, while Cities concentrates the dynamism of the metropolis in traits that propagate into different directions in a seemingly chaotic way. Each decor concentrates energy, stylistic sophistication and dynamism to ignite the imagination of the beholder.

fantini



SNOW

il movimento leggero / light movement



Haze

Powder

Blizzard



fantini



LEAF

le sfumature delle stagioni / nuances of the seasons



Maple

Birch

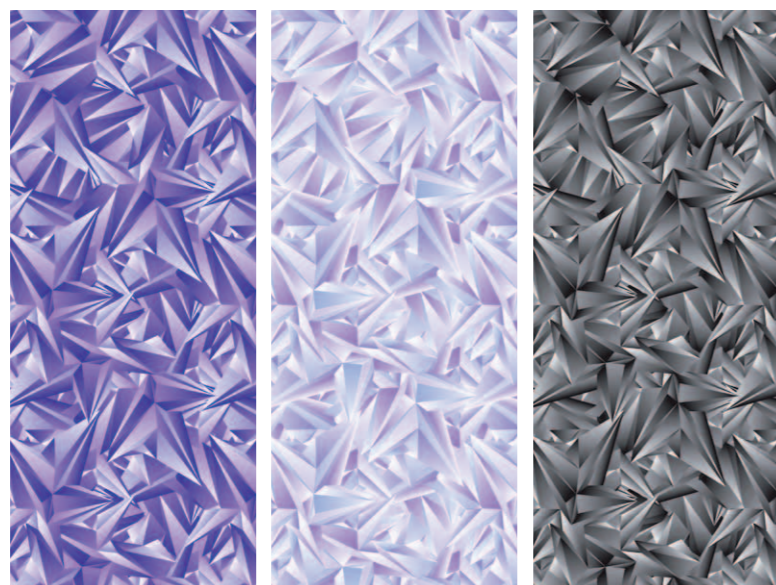
Palm

fantini



ICICLES

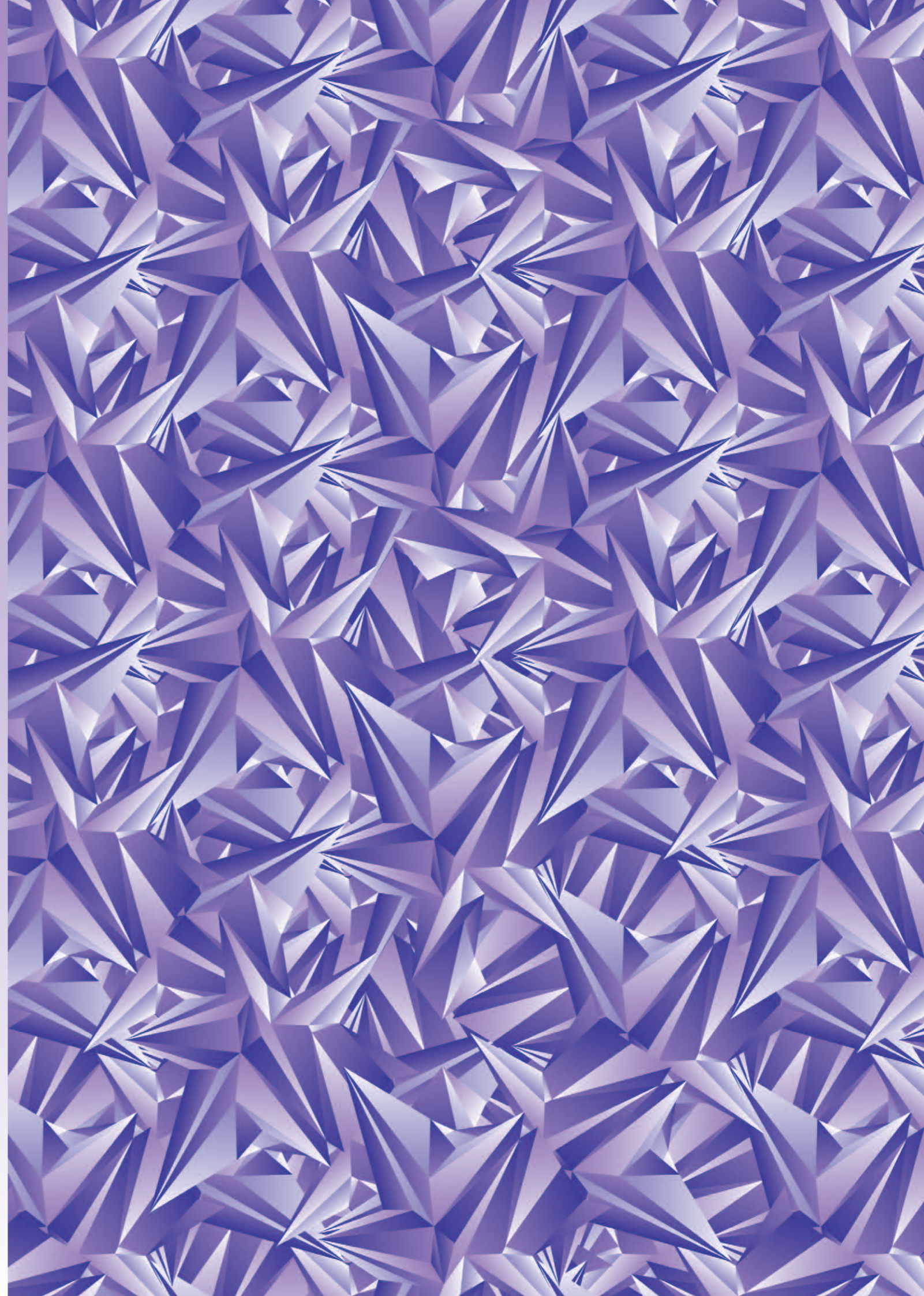
l'instabilità percettiva / perceptual instability



Amethyst

Frost

Kwartz

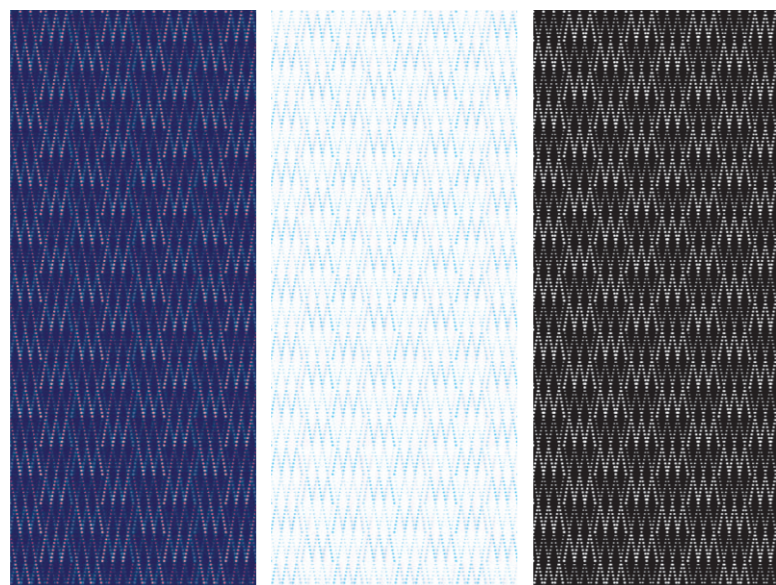


fantini



RAIN

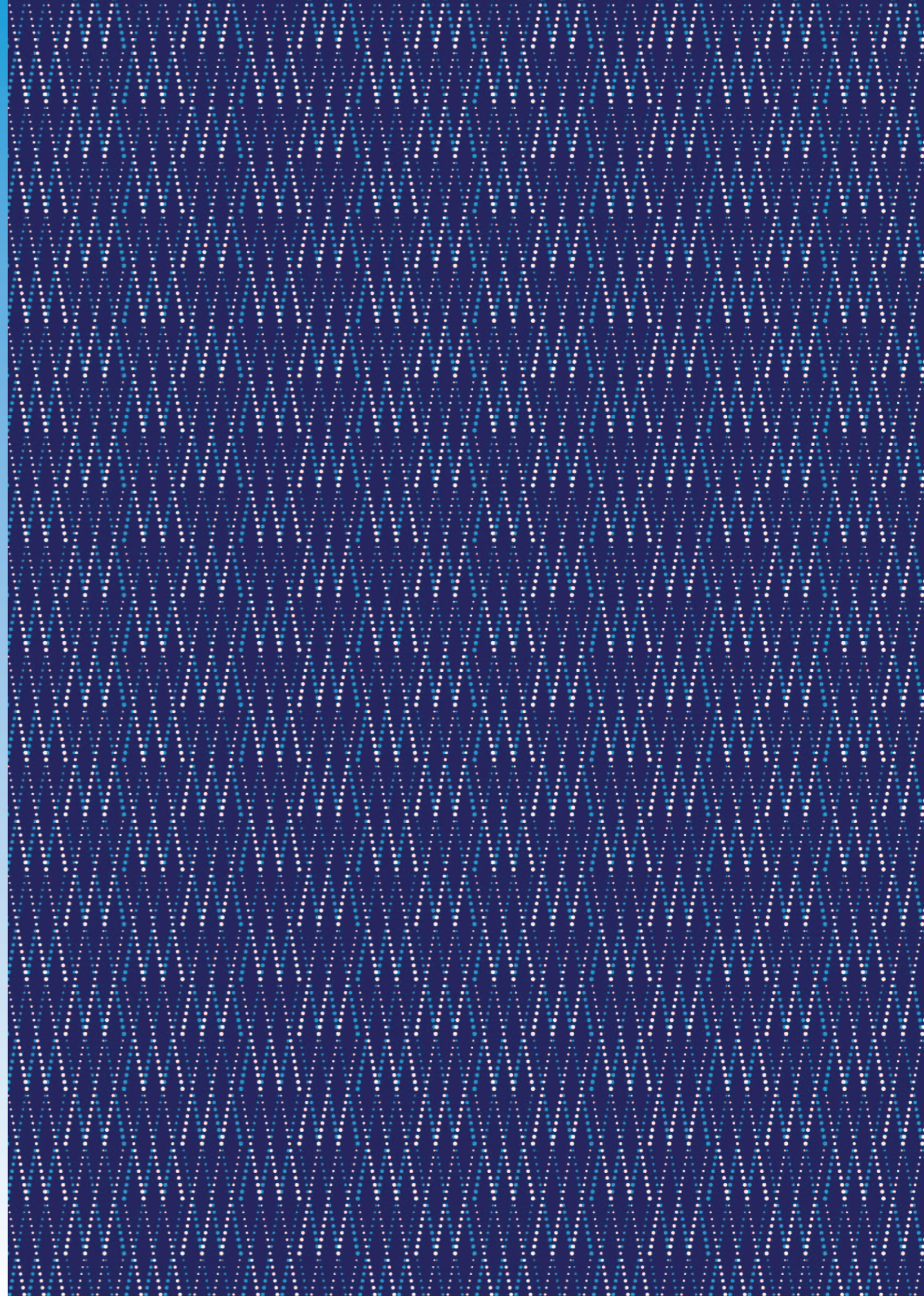
l'incessante ripetersi / incessant repetition



Monsoon

Drizzle

Storm

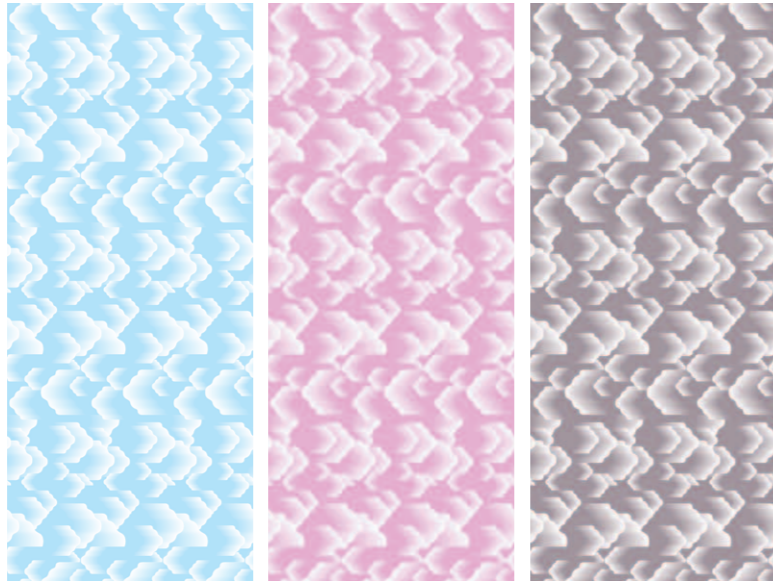


fantini



KLOUDS

la mutabilità del colore / mutability of colour



Cirrus

Sunset

Nimbus

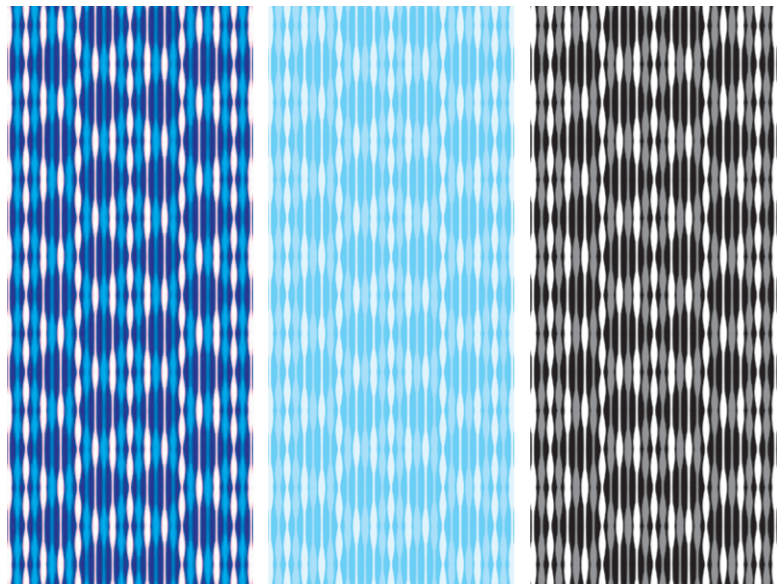


fantini



WATERFALL

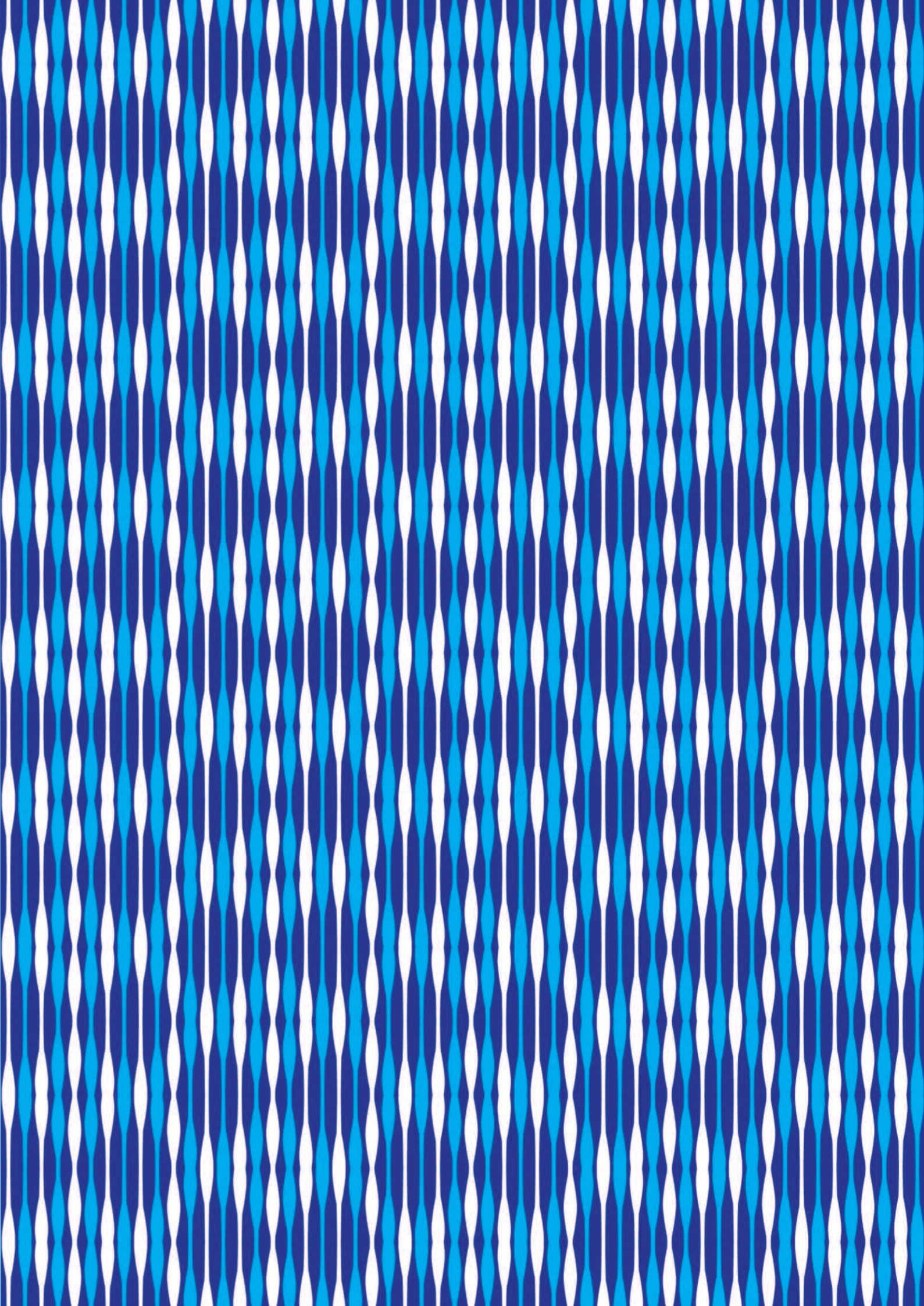
la copiosità senza soluzione di continuità / seamless abundance



Niagara

Kascade

Plunge



fantini



KRYSTAL

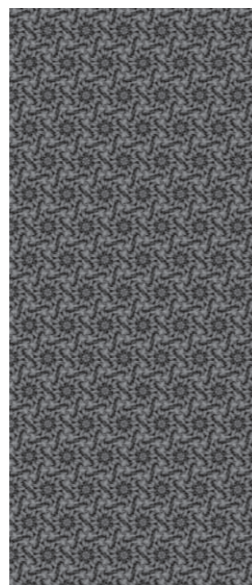
la profondità del freddo / depth of cold



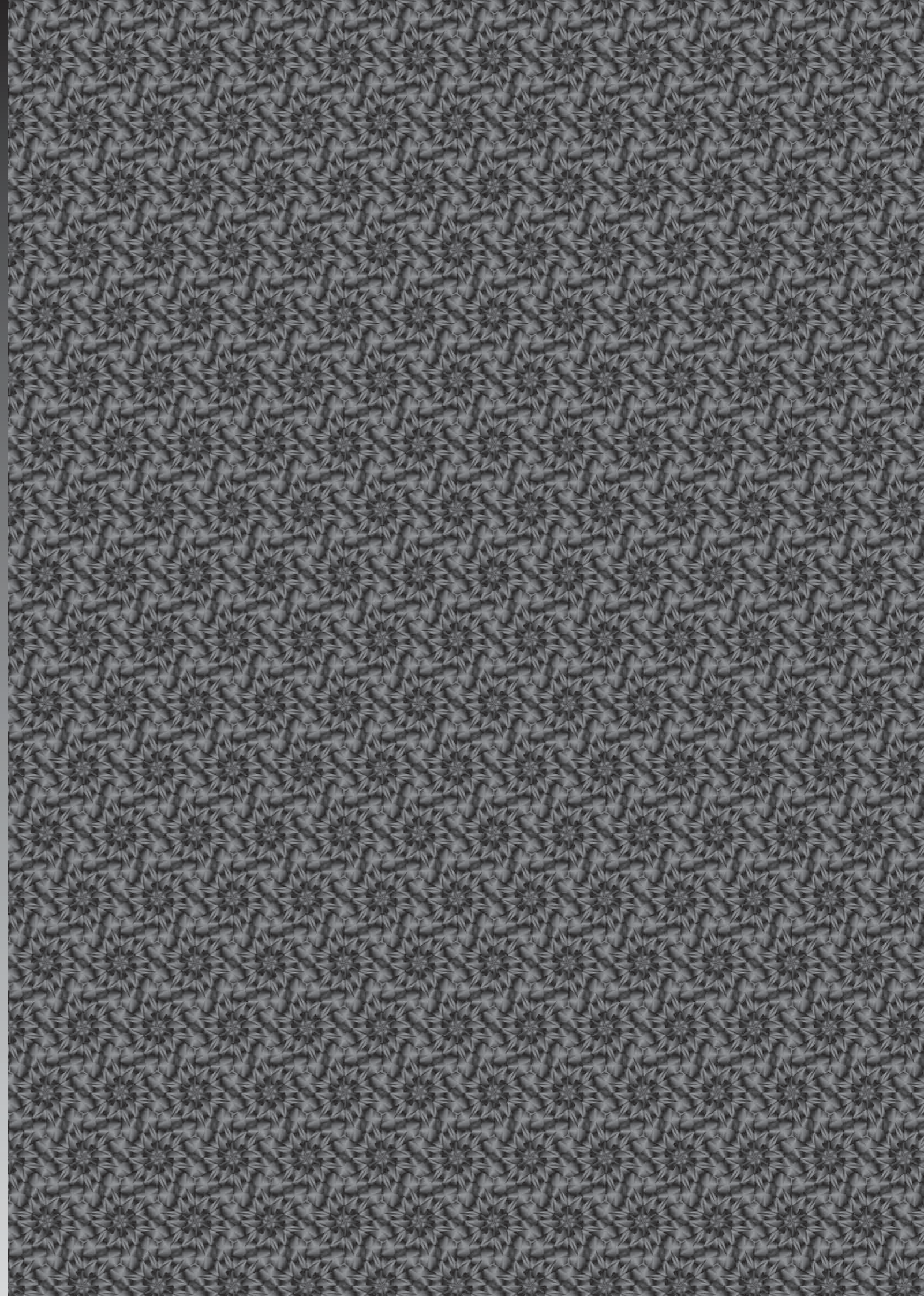
Ice



Silver



Black

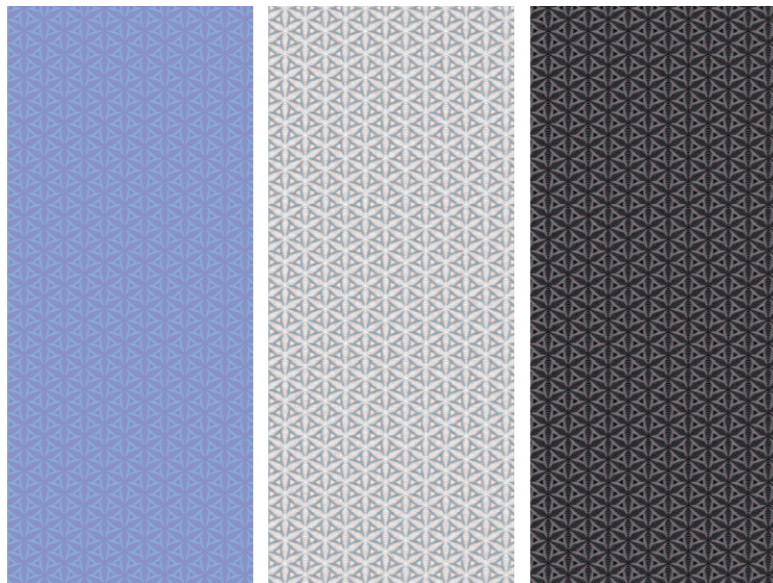


fantini



SHELL

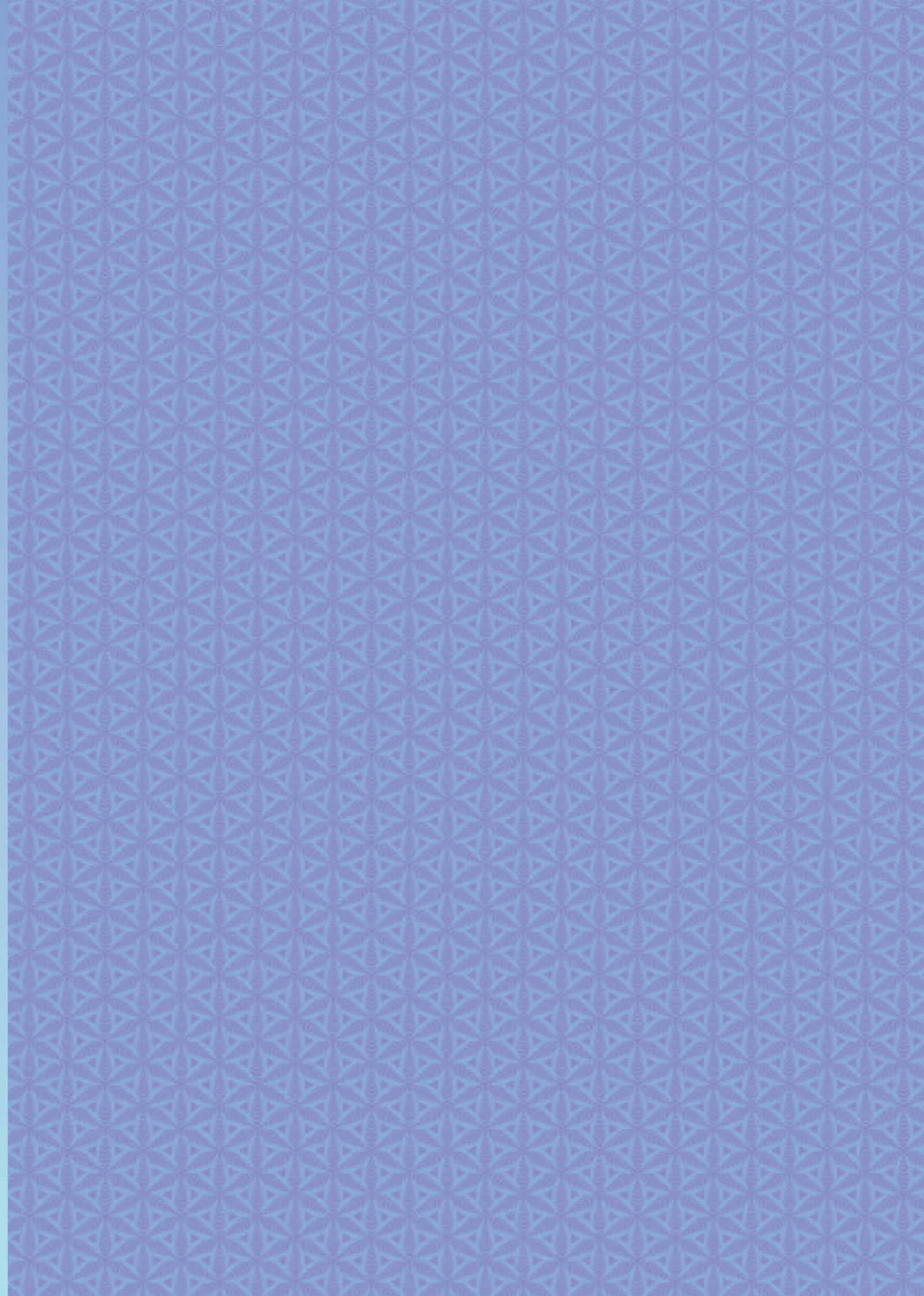
la morbida geometria / soft geometry



Konch

Triton

Spirula

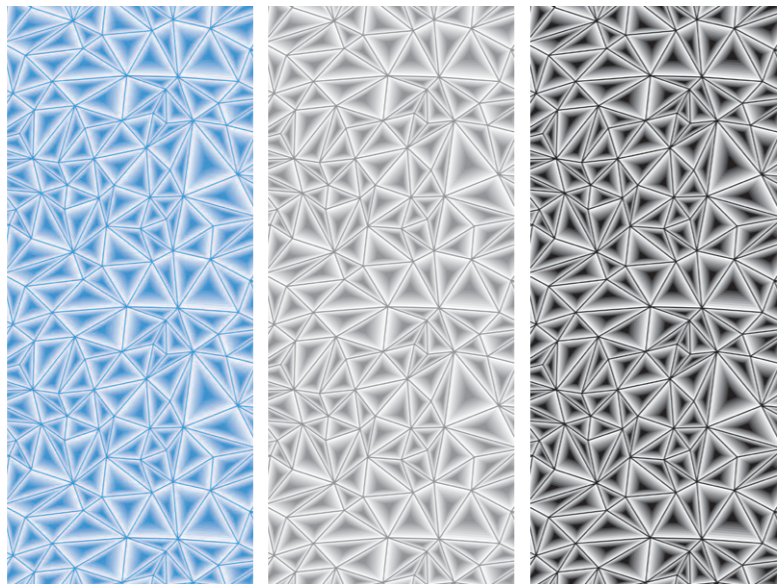


fantini



GLACIER

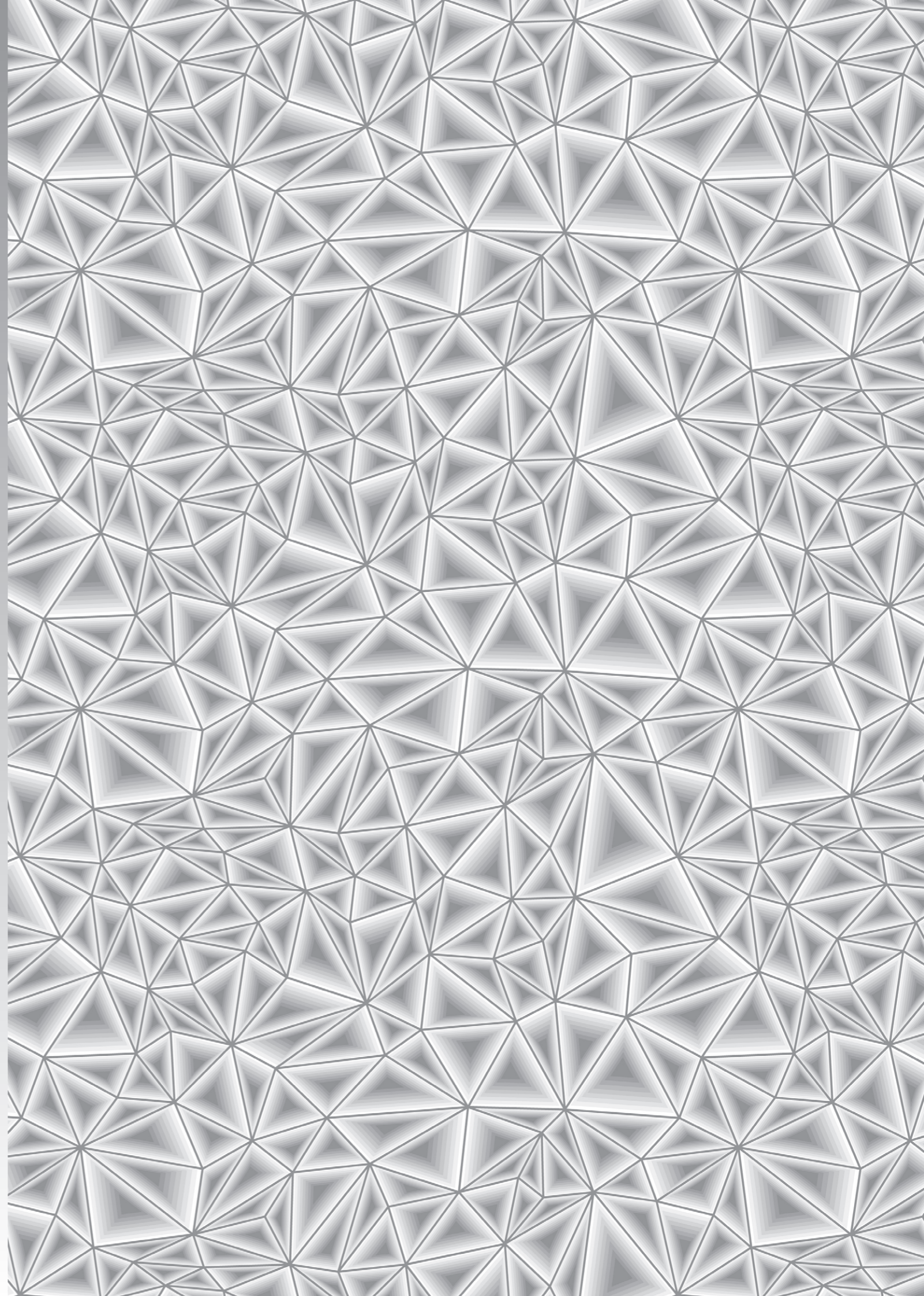
l'imprevedibilità delle forme / unpredictability of shapes



Alpine

Fjord

Thermal

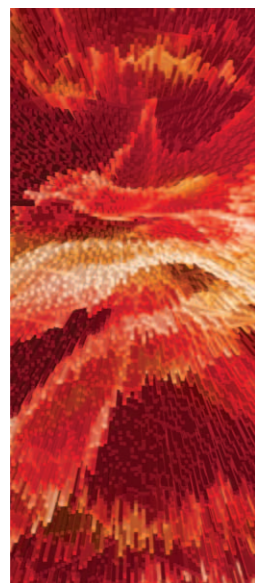


fantm

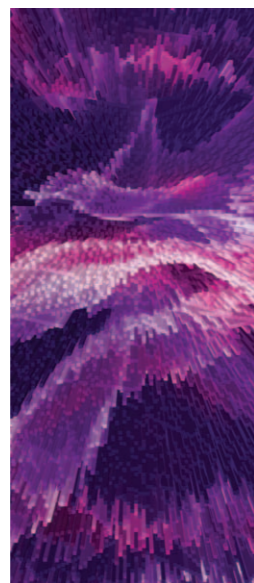


CITIES

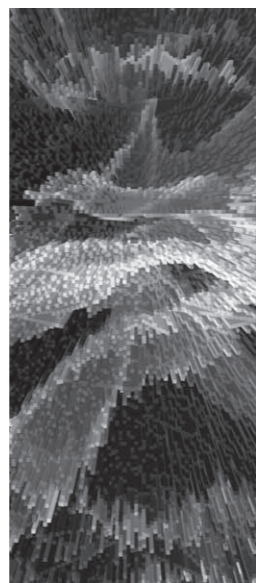
l'esplosione della vivacità / explosion of vitality



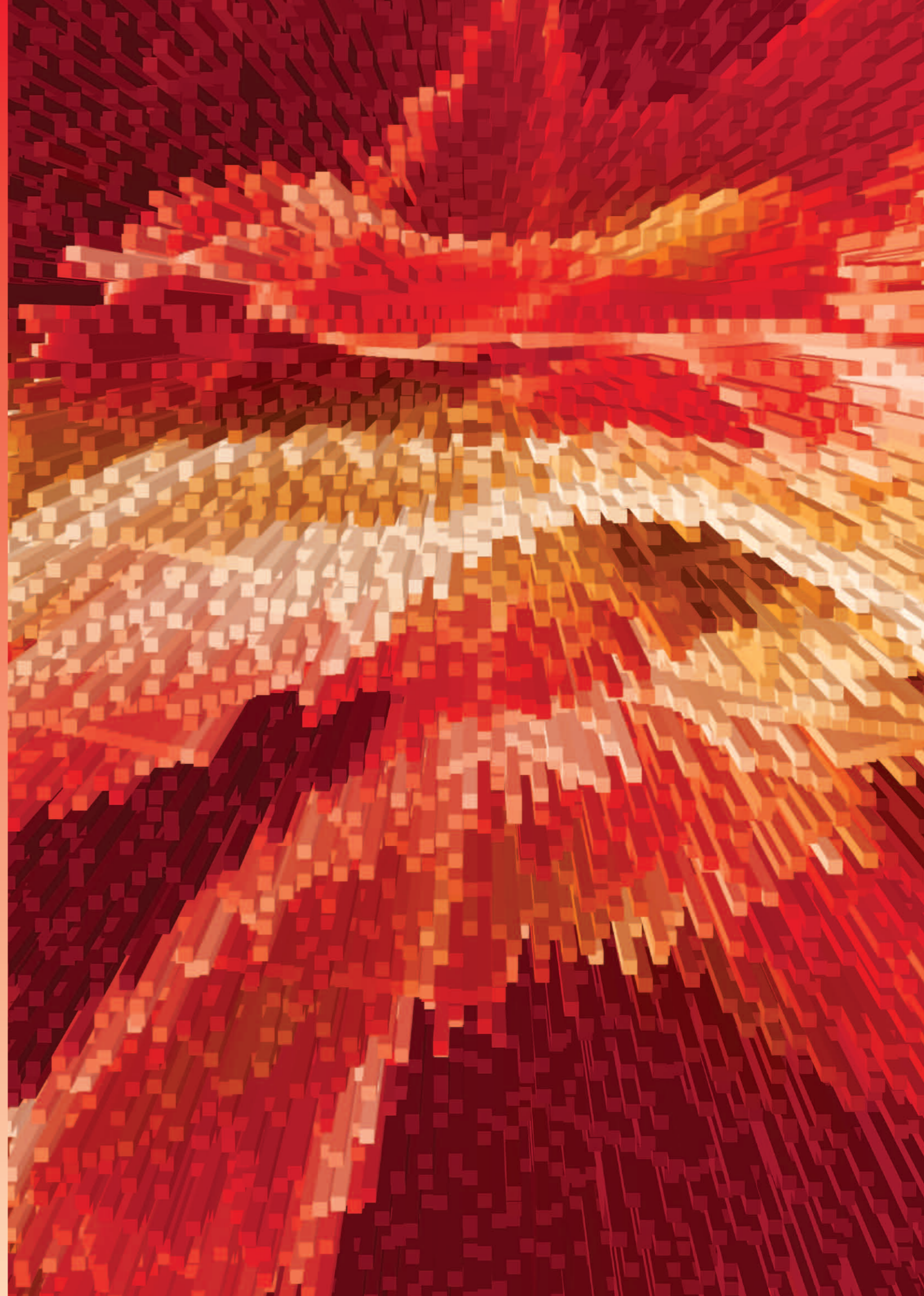
Kosmo



Muni



Urban



Abet Laminati Press Office:
Federica Ferraris Bottigli +39 0172 419 388 - federica.ferraris@abet-laminati.it

www.abet-laminati.it