

We assume a guarantee – according to our manufacturer guarantee statement – of 5 years for our products, provided that it can be demonstrated that the product was purchased and mounted through a franchised specialist craftsman. The guarantee period begins on the date of delivery from our plant. The statutory warranty period is contained in the guarantee period. Electronic components and lighting articles are omitted from this guarantee statement.

Even the most advanced printing technologies cannot fully reproduce the exceptional finish and subtle colour schemes of our products. Only original KEUCO products can provide you with an optimum impression. These are on display in stores catering to the special sanitary trade.

No part of this brochure may be reprinted or duplicated, even in part, without our explicit consent and without specification of the source manufacturer.
KEUCO GmbH & Co. KG,
Postfach 1365, D-58653 Hemer

We accept no liability for changes resulting from technical advances and necessary modifications of design and colour, nor from print errors.

Our products are exclusively available through sanitary product wholesalers.

Concept, text, design,
and lithography:
Kontrast Communication
Services GmbH, Düsseldorf
Setting/product photography:
Studio CASA, Münster
Printing:
Meinders & Elstermann
GmbH & Co. KG,
Belm (Osnabrück)
Printed on GALAXI Keramik.
Supplied by the Papier Union.

BARRIER-FREE BATHROOMS

TABLE OF CONTENTS	3
FOREWORD	4–5
PLAN	6–35
Wash-basin	10–19
Shower	20–29
WC	30–35
SMART	36–45
Wash-basin	40–41
Shower	42–43
WC	44–45

Table of Contents

PRODUCT OVERVIEW	46–64
-------------------------	-------

You receive a 5 year guarantee on all products in this brochure. For PLAN products we provide an additional availability guarantee until 2030.



"Whether in private bathrooms or public sanitary facilities: more and more, accessibility is becoming a standard requirement. Unfortunately, an essential consideration here is often omitted: even when demands for more convenience increase, people's expectations on aesthetics do not diminish. To put it another way, high quality design is an expectation that is universal. On the subject of Universal Design, KEUCO has been a pioneer for years. PLAN CARE and SMART CARE are the living proof that accessibility, functionality and aesthetic design can exist side by side. And, in this respect, KEUCO offers modular solutions that can be perfectly adapted to different buildings and budgets."

Hartmut Dalheimer, Managing Director/Engelbert Himrich, Managing Partner





PLAN
The evolution of comfort



The PLAN bathroom concept does not set standards only in terms of design. The assortment also has an enormous range and depth. PLAN CARE takes this principle one step further, and offers Universal Design in the best sense of the word: The module principle allows you to create bathrooms of every level of comfort – even wheelchair accessible sanitary areas that are not only functional, but meet expectations in terms of aesthetics in every detail. Here, PLAN CARE is just as suitable for the private bathroom as it is for public spaces such as hotels and clinics. The excellent quality of the materials and workmanship make PLAN a secure and lasting investment, even in heavy duty areas.



With seemingly casual elegance, this wash-basin module combines maximum comfort with stylish design. The wheelchair-compatible furniture is designed with shelf spaces for placing things within easy reach, and has two easily accessible towel holders that can be also used as towel rails.



The furniture in the genuine light oak veneer variation establishes a warm and homey atmosphere in the bathroom. The one-piece wash-basin with easy care, high rising rear wall has an integrated, beautifully shaped fitting. The matching side cupboard with its softly sliding jalousie made of satin glass allows, at sitting height, convenient access to everything that one needs at the wash-basin.

Product overview, see pages 46–59

The PLAN Integral wall integration modules for wash-basin and WC are extremely well-suited for heavily frequented public sanitary facilities. Not only do they convince through their advantages such as easy cleaning, sturdiness and easy refilling, but they also come in an elegantly discreet design.

Product overview, see pages 46–59





PLAN adapts outstandingly to any room situation. Here, the wide wash-basin module also serves as separate makeup area with its own mirror. Special feature: the PLAN light mirror has a pleasant, indirect night light that gently illuminates the wash-basin area.

Product overview, see pages 46–59



In the PLAN series, a wealth of variations of KEUCO fittings, are part of the concept. Here are three wash-basin fittings with different designs: above left is the sensor fitting for contact-free operation; under that is the design variation, PLAN blue, with its slim shape and a water-saving flow rate limiter that limits flow to six litres per minute. Right: the classic model of the PLAN single lever with its theft-proof perlator, for use in heavily frequented sanitary rooms.

**Product overview,
see pages 46–59**





With PLAN CARE, you can turn a shower area into real centrepiece. As with all accessories and fittings, the towel rails are available in two different surface variations: high-glossed chrome and discreet matt-aluminium silver anodized.



Towel rails with a system: with PLAN CARE, they are multi-talents. Not only do they give the user a sense of security, but they also hold the easily removable tip-up seat, and serve as hand shower sliding rail. Right: towel rail and fitting in silver anodized aluminium. Matching that is the tip-up seat, permanently fixed to the wall. Variations on surface and functionality: the fittings are available in a wide range of variations for surface installation or flush-mounted fitting.

Product overview, see pages 46–59





You make the plans, PLAN follows your cue – the shower curtain rail sets can adapt to virtually any eventuality. The picture in the middle demonstrates one of many application possibilities: the wall mounting with cover has limitless adjusting possibilities for any slanted ceiling with an inclination ranging from 10 to 80 degrees. And the PLAN shower curtains are simply beautiful – but they are also anti-bacterial, fungicidal, shower-proof, and antistatic. The available colour nuances of white, ecru, off-white and light grey match the widest range of colour worlds. For bathrooms with higher fire prevention requirements, the PLAN shower curtain is also available as hardly inflammable model.

Product overview, see pages 46–59





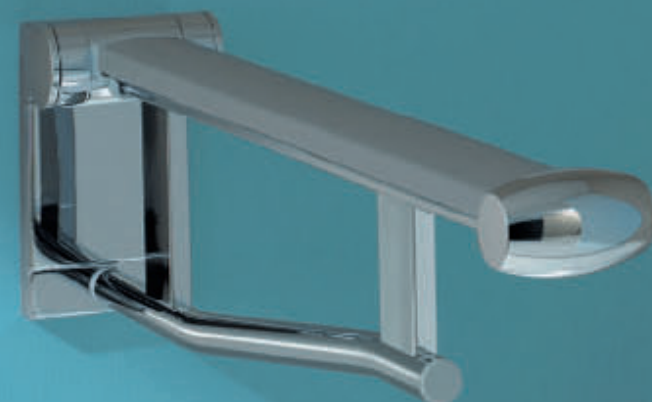
It is easy to hang the tip-up seat with back rest onto the angel bar – and just as easy to remove it again. The same applies to the spray guard. That means this shower concept can be adapted in a matter of seconds for showering in standing or sitting.

Product overview, see pages 46–59



Meticulously worked fittings, made according to high engineering standards, incorporated in an integrated design concept. That's typical KEUCO – and PLAN is no exception. Pictured here is an example from the wide assortment offered for the shower: the single lever shower mixer for surface installation, with hose connection. With its convenient and insulated water line, it protects against skin burns and skin irritation. Beside it on the right, a flush-mounted fitting variation with circular decor disc.

Product overview, see pages 46–59



In the WC area it is plain to see that with PLAN, design and accessibility merge into an integrated unit: Uncompromising functionality with many intelligent details combine with ease into an autonomous, elegant aesthetic.



The PLAN pivoted supporting rail for WC is also available as variation with an electronic remote controlled flush system (see picture on the right).

Product overview, see pages 46–59



Left side: The PLAN CARE pivoted supporting rails for WC slide gently, thanks to its braked mechanism. The WC back rest is hung onto the rail, and because of a wall spacer, stands securely in an upright position. The toilet brush set has a hygienically sealed housing, and a replaceable brush head.

Product overview, see pages 46–59





SMART
Feeling good in every bathroom



SMART CARE is the budget-oriented solution for accessible sanitary areas. It is just as suitable for public facilities as it is for private quarters. The elegant, straightforward functional design creates a pleasant atmosphere where everyone feels at home.



SMART combination: The PLAN blue fitting with its slender, reduced shape adapts itself perfectly to the SMART bathroom. Sitting in front of the wheelchair-compatible wash-basin, it is easy to reach the lever of the continuously adjustable tiltable mirror. Also part of the assortment are pivoted supporting rails and supporting rails. And if that is not enough, it is even possible to combine all SMART accessories with the SMART CARE articles.

Product overview, see pages 60–62





The hand shower sliding rail is designed so robustly that it also serves as handle. The PLAN CARE tip-up seat is also very useful in a SMART CARE shower – if as a welcome comfort feature, or because it provides more security in the area of personal mobility.

Product overview, see pages 60–62



Thanks to the module principle, a SMART CARE WC solution can be designed to meet your individual needs, and it can also be retrofitted. From the back rest to the Pivoted supporting rail with its electronic remote controlled flush system, right to the angle bar on which a toilet paper holder can be attached: the only limits on comfort are those which the planner sets.

Product overview, see pages 60–62

surface
chrome-plated

surface aluminium silver anodized (E6 EV1)
or aluminium finish

PLAN



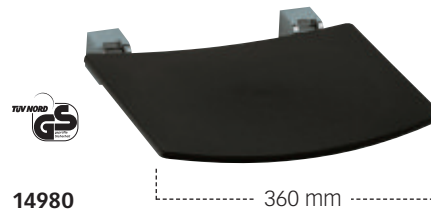
**34979
Back rest**
for use on WC,
consists of wall rail, (600 mm) and
back rest in dark grey and light grey



**34982
Tip-up seat with back rest**
for wall mounting, seat folds upwards,
seat size 360 mm wide, seat surface and back
rest in dark grey or light grey



**34981
Tip-up seat with back rest**
for hanging in handles as well as shower
and bath tub handles, seat folds upwards,
seat size 360 mm wide, seat surface and
back rest in dark grey and light grey



**14980
Tip-up seat**
fo wall mounting, seat folds upwards,
seat size 360 mm wide, seat surface in dark grey
or light grey



**34901
Towel rail**
for horizontal or vertical installation
382, 482, 582, 682, 782, 882, 982, 1082, 1182 mm



**34907
Angle bar 135°**
may be used on the left or right
673 x 266 mm



**34906
Angle bar 90°**
may be used on the left or right
465 x 765 mm



**34906
Angle bar 90°**
for use as shower rail
complete with shower head bracket
may be used on the left or right
565 x 1265 mm



**34912
Hand shower
sliding rail**
complete with
shower bracket
982, 1182 mm

Product Overview

**34908
Rail system**
complete with shower bracket
may be used on the left or right
597 x 680 x 1265 mm
597 x 880 x 1265 mm
797 x 680 x 1265 mm
797 x 880 x 1265 mm



**34915
Rail system**
complete with shower bracket
may be used on the left or right
flexible positioning of sliding rail
prior to final installation
797 x 797 x 1263 mm
797 x 1097 x 1263 mm
1097 x 797 x 1263 mm
1097 x 1097 x 1263 mm
1097 x 1297 x 1263 mm
1297 x 1097 x 1263 mm



**34914
Rail system**
complete with shower bracket
flexible positioning of sliding rail
prior to final installation
682 x 1263 mm
982 x 1263 mm
1182 x 1263 mm



**34911
Corner rail for shower/bath**
may be used on the left or right
400 x 400 mm
400 x 600 mm
600 x 600 mm

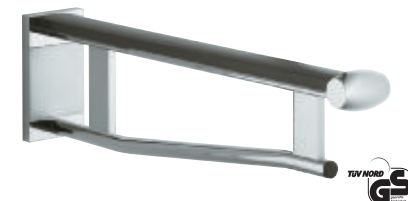
**34910
Hand shower bracket**
for shower rail, height adjustable



**34962
Toilet paper holder**
for mounting on an angle bar



**34902
Cover plate**
for fastening holes for
supporting rails and pivoted supporting rails



**34904
Supporting rail for wash basin**
firmly fastened,
with synthetic covered support
Projection: 450/650 mm

**34986
Tiltable mirror**
also suitable for installation with wall offset
Dimensions (w x h): 600 x 540 mm



**34902
Pivoted supporting rail for wash basin**
with synthetic covered support,
to vertical position movable, braked version
Projection: 650 mm



**34905
Pivoted supporting rail for WC***
firmly fastened, with synthetic covered support
and removable toilet paper holder with rollbrake
Projection: 700/850 mm



**34903
Pivoted supporting rail for WC***
with synthetic covered support,
to vertical position movable, braked version and
removable toilet paper holder with rollbrake
Projection: 700/850 mm

■ surface
chrome-plated

■ surface aluminium silver anodized (E6 EV1)
or aluminium finish



14901
Towel rail
651, 851 mm



14910
Shelf
with crystalline glass shelf
220 x 100 mm
350 x 120 mm
550 x 120 mm



14911
Towel hook
with door buffer, black

14914
Towel hook



14916
Towel hook

14953
Lotion dispenser
frosted crystal glass
Capacity: approx. 250 ml



14949
Built in soap dispenser
for mounting on washbasin
or washbasin worktop



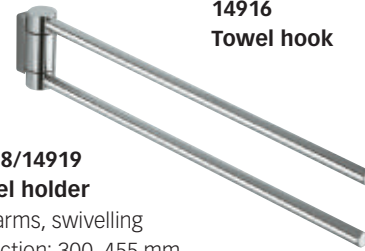
14957
Soap foam dispenser
frosted opal glass
Capacity: approx. 250 ml
including starter materials
foam-soap (2 x 500 ml)



14907
Towel rail
350 mm



14913
Towel hook panel
with 4 hooks



14918/14919
Towel holder
two arms, swivelling
Projection: 300, 455 mm

SENSOR

14956
Lotion dispenser
sensor-controlled,
Capacity: approx. 0.8 l
battery-operated, 4 batteries
1.5 V AA required



14954
Lotion dispenser
Capacity: approx. 1.1 l



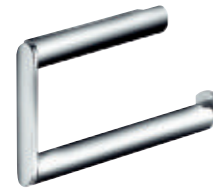
14950
Tumbler holder
with crystal glass tumbler



Product Overview



14921
Towel ring
large model



14922
Towel ring
small model



14958
Universal dish
with crystal glass plate
210 x 115 mm



17676
Cosmetic mirror
wall mounted, illuminated
optional with mains connection
or helix cable and power plug,
magnification factor x 5,
1 x 8 W energy efficient lamp, Ø 207 mm



14955
Soap holder
with crystal glass dish



14952
Lotion dispenser, standing model
Capacity: approx. 250 ml



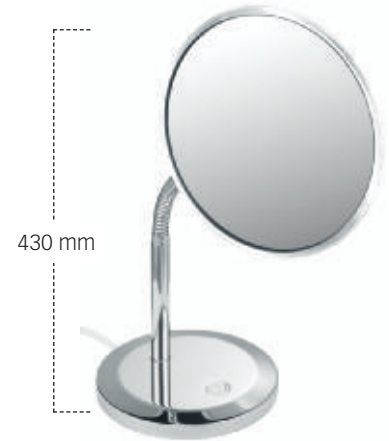
14953
Lotion dispenser, wall model
Capacity: approx. 250 ml



14982
Bathroom stool
also suitable for wet rooms



17649
Cosmetic mirror
with pivoting arm, non illuminated,
adjustable in three dimensions,
magnification factor x 2.5
Ø 190 mm



17677
Cosmetic mirror
table model, illuminated
with power lead (1.70 m),
magnification factor x 5,
1 x 8 W energy-efficient light lamp, Ø 207 mm

■ surface
chrome-plated

■ surface aluminium silver anodized (E6 EV1)
or aluminium finish



149963
Spare paper holder



14960
Toilet paper holder
with lid
for 100/120 mm wide paper rolls



14962
Toilet paper holder
open form
for 100/120 mm wide paper rolls



14961
Toilet paper holder
closed form, theft-proof,
for 100/120 mm wide paper rolls



14965
Ashtray
with fireproof ash dish,
theft-proof



14972
Toilet brush set
with removable synthetic insert,
brush and spare brush head



14964
Toilet brush set
with removable synthetic insert,
brush and spare brush head



34964
Toilet brush set
complete with synthetic insert, brush with
extended handle and spare brush head

Product Overview

14977
Sanitary waste bin
wall mounted
Capacity: 3 l



14988
Waste bin
wall mounted
Capacity: 30 l



14985
Paper towel dispenser



14995
Hair dryer
with wall mount, 230 V
Features:
• Line disconnecter with indicator light
on the wall holder
• 3 heating levels up to max. 1.800 W
• 2 speed levels
• Cold air button
• Overheating protection



06549
Wall light
with frosted opal glass
(2 x 40 watt E14)

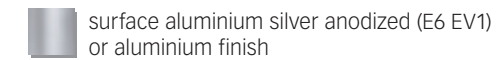
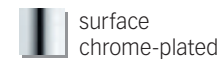


14969
Multiple toilet roll dispenser
for horizontal or vertical installation,
can be mounted for 2 rolls of
100/120 mm in width



14970
Multiple toilet roll dispenser
for horizontal or vertical installation, can be
mounted for 3 rolls of 100/120 mm in width





14945 Shower curtain PLAN*
all sizes custom-made
Please indicate: materials, colours, full length and width

***Notes on production characteristics:** Vertical seams, reinforced stainless steel eyelets, distance between the eyelets approx. 20 cm, roll hem stainless steel weighted, 50 g per metre, complete with curtain rings, white.

Notes on sizes: The sizes indicated are the sizes of the finished curtain. To prevent the curtain from lying on the ground we recommend a distance from curtain to floor of approx. 30 mm. Distance between the middle of the curtain rod and the upper edge of the curtain approx. 40 mm. The width of the curtain should be approx. 1.3 to 1.5 times the length of the shower curtain rod.

14934 Wall mounting set
with cover, for slanted ceilings adjustable between 10 to 80 degrees



14935 Wall mounting set
with decor cover



14927 Curtain ring
in black or white



34940 Spray guard
to be hooked on rail system or grab rails complete with shower curtain PLAN maxx (670 x 800 mm)

14941 Ceiling support (set)
complete, consisting of:
1 x wall mounting set
1 x shower curtain rail
1 x connecting piece 300–800 mm



14930 Shower curtain rail
300–2000 mm



14924 Tube angle piece 90°
for rectangular shower tray



14931 Connecting piece
in dark grey or chrome-plated



14938 Set of shower curtain rails
for quarter-circle shower tray 900 x 900 mm, consisting of:
3 x wall mounting set
2 x shower curtain rail 300 mm
1 x tube angle piece for quarter-circle shower tray
1 x ceiling support 400 mm
1 x connecting piece
2 x 10 shower curtain rings, white

as desired, also available with shower curtain PLAN uni white



14932 Connecting tube



14925 Tube angle piece 90°
for quarter-circle shower tray

Product Overview



14943 / 14944 Shower curtain PLAN uni*
100% Trevira, 80g/m², shower proof, fungicidal, anti-bacterial, anti-static, calendered, washable at 30 °C, can be disinfected at 60 °C (Shrinkage rate 1–2%), ironing possible (Shrinkage rate 3–5%), tested for harmful substances according to the Oeko-Tex Standard 100
Full length: 1800, 2000 mm
Width: 1400, 2000, 3000 mm
Colours: white, ecru, light grey



14943 / 14944 Shower curtain PLAN Flame CS*
highly flame resistant according to DIN 4102/B1 100% Trevira, 80 g/m², shower proof, fungicidal, anti-bacterial, anti-static, calendered, washable at 30 °C, can be disinfected at 60 °C (shrinkage rate 1–2%), ironing possible (shrinkage rate 3–5%), tested for harmful substances according to the Oeko-Tex Standard 100
Full length: 1800, 2000 mm
Width: 1400, 2000, 3000 mm
Colour: off-white



14946 / 14947 / 34948 Shower curtain PLAN maxx*
100% polyester, 75 g/m², shower proof, fungicidal, anti-bacterial, washable at 30 °C (shrinkage rate 3%), ironing possible (shrinkage rate 3–5%), tested for harmful substances according to the Oeko-Tex Standard 100
Full length: 1800, 2000 mm
Width: 1800, 2000, 3000 mm
Colour: white



14940 Set of shower curtain rails
for rectangular shower tray
Dimensions: 1000 x 1000 mm and 1200 x 1200 mm
consisting of:
2 x wall mounting set
3 x shower curtain rail
2 x tube angle piece 90° for rectangular shower tray
3 x 10 shower curtain rings, white

as desired, also available with 2 shower curtains PLAN maxx white



14936 Set of shower curtain rails
for rectangular shower tray
Dimensions: 800 x 800 mm and 900 x 900 mm
consisting of:
3 x wall mounting set
2 x shower curtain rail
1 x tube angle piece 90° for rectangular shower tray
1 x ceiling support 400 mm
1 x connecting piece
2 x 10 shower curtain rings, white

as desired, also available with shower curtain PLAN uni white



14939 Set of shower curtain rails
for rectangular shower tray
Dimensions: 1000 x 1000 mm and 1200 x 1200 mm
consisting of:
2 x wall mounting set
2 x shower curtain rail
1 x tube angle piece 90° for rectangular shower tray
2 x 10 shower curtain rings, white

as desired, also available with shower curtain PLAN maxx white

***Notes on production characteristics:** Vertical seams, reinforced stainless steel eyelets, distance between the eyelets approx. 20 cm, roll hem stainless steel weighted, 50 g per metre, complete with curtain rings, white. **Notes on sizes:** The sizes indicated are the sizes of the finished curtain. To prevent the curtain from lying on the ground we recommend a distance from curtain to floor of approx. 30 mm. Distance between the middle of the curtain rod and the upper edge of the curtain approx. 40 mm. The width of the curtain should be approx. 1.3 to 1.5 times the length of the shower curtain rod.



DVGW
54902
Single lever basin mixer
 with/without pop-up waste, 1-hole installation, ceramic cartridge with temperature limiter



DVGW
54903
Single lever basin mixer
 with/without pop-up waste, for open hot water heater, 1-hole installation, ceramic cartridge with temperature limiter



DVGW
54904
Single lever basin mixer
 without pop-up waste, middle size model, 1-hole installation, ceramic cartridge with temperature limiter



surface chrome-plated
53902
Single lever basin mixer PLAN blue
 with/without pop-up waste, 1-hole installation, ceramic cartridge with temperature limiter, flow rate limited to 6 l/min.



surface aluminium silver anodized (E6 EV1) or aluminium finish
54991
Wall bracket for hand shower
 for shower hoses with conical nuts



54947
Wall bracket for shower hose
 suitable for all in wall fittings



SENSOR
54911
Infrared basin mixer
 with/without pop-up waste, 1-hole installation, modular monoblock without base, infrared sensor (automatic settings), adjustable flow timer (battery 6 V lithium DL 223 A)



SENSOR
54912
Infrared basin mixer
 without pop-up waste, 1-hole installation, modular monoblock without base, infrared sensor (automatic settings), adjustable flow timer (mains operation 230 V)



DVGW
54908
Pillar tap
 without pop-up waste, 1-hole installation, 90° head part with ceramic sealing gaskets



54921
Single lever basin mixer
 exposed, ceramic cartridge with temperature limiter
 Projection: 150 mm, 200 mm, 250 mm



54980
Hand shower
 with anti-calcification system, functions:
 • Normal jet
 • Soft jet
 • Massage jet



54985
Hand shower sliding rail
 consisting of:
 • Wall rail, 851 mm
 • Sliding bracket for hand shower
 • Tile compensation plate

Product Overview



DVGW
54909
Single lever bidet mixer
 with pop-up waste, 1-hole installation, ceramic cartridge with temperature limiter



DVGW
54924
Single lever shower mixer
 exposed, ceramic cartridge with temperature limiter



54971
Single lever shower mixer
 concealed, complete set matches Flexx Boxx EHM DN 20, consisting of: lever, sleeve and collar



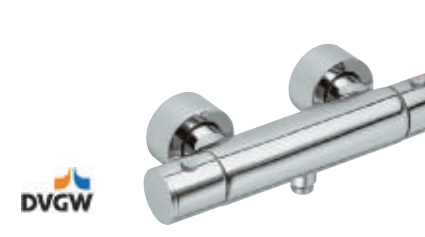
54973
Thermostat battery
 concealed, with ceramic stop valve, complete set matches Flexx Boxx THM DN 20, consisting of: lever, sleeve and collar



54995
Shower hose
 1250, 1600, 2000 mm



54920
Single lever bath tub mixer
 exposed, ceramic cartridge with temperature limiter, with automatic return bath tub/shower



DVGW
54926
Thermostat battery for shower
 exposed, handle with 50% quantity limiter, safety cut-off at 38 °C, intrinsically safe against backflow



54972
Single lever bath tub mixer
 concealed, complete set matches Flexx Boxx EHM DN 20, consisting of: lever, sleeve adjuster and collar



54974
Thermostat battery
 concealed, with ceramic stop valve and diverter, complete set matches Flexx Boxx THM DN 20, consisting of: lever, sleeve and collar



54945
Bath filler
 suitable for all in wall fittings
 Projection: 135, 185 mm

Veneer body

tobacco oak veneer

light oak veneer

Lacquer body

high-gloss white

black

surface chrome-plated

surface aluminium silver anodized (E6 EV1) or aluminium finish

PLAN



37520 Set for washbasin 1
consisting of: cast mineral washbasin incl. fastening bracket, single-lever mixer, Clou drain and overflow system



37521 Set for washbasin 2
consisting of: cast mineral washbasin incl. fastening bracket, single-lever mixer, towel holders integrated into the sides, Clou drain and overflow system



37523 Cast mineral washbasin
with/without tap hole, incl. mounting bracket, with towel holders integrated into the sides, with Clou drain and overflow system



37522 Cast mineral washbasin
with/without tap hole, incl. mounting bracket, with Clou drain and overflow system



37541 Side cabinet
front with glass jalousie
Features:
• 4 vertically adjustable glass shelves
• 3 electric sockets
• As desired also available with colour light illumination (LED) and control unit
Dimensions (w x h x d): 400 x 1311 x 350 mm

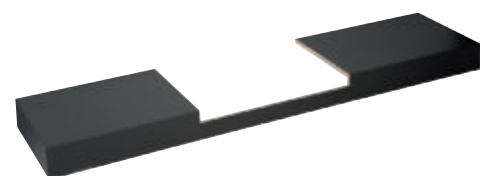


37543 Side cabinet
front with glass jalousie
Features:
• 4 vertically adjustable glass shelves
• 3 electric sockets
• Fully extractable drawer and closure cushioning
• As desired also available with colour light illumination (LED) and control unit
Dimensions (w x h x d): 400 x 1511 x 350 mm

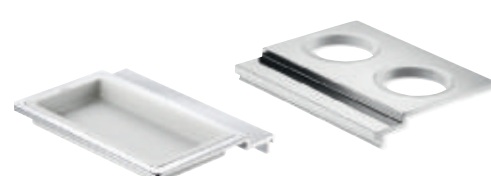


37545 Side cabinet
front with glass jalousie
Features:
• 4 vertically adjustable glass shelves
• 3 electric sockets
• Laundry basket
• As desired also available with colour light illumination (LED) and control unit
Dimensions (w x h x d): 400 x 1731 x 350 mm

Product Overview



37529 Washbasin apron
including 4 mounting brackets, for combining with washbasin sets 1–4
Dimensions (w x d): 1000–2500 x 350 mm



37531 Double tumbler holder
available separately, may be combined with washbasin sets 1–4 and cast mineral washbasin

37530 Universal shelf
includes holder and dish



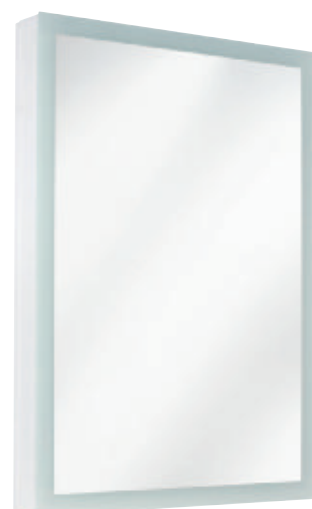
37529 Washbasin apron
matches washbasin sets 1–4



14950 Crystal glass tumbler
available separately



14948 Lotion dispenser
frosted crystal glass
Capacity: approx. 250 ml



37596 Light mirror
may be combined with washbasin sets 1–4, with integrated sensor switch, as desired also available with surrounding night illumination, fluorescent lamps
Illumination/Dimensions (w x h x d): (2 x 14 W T5 and 2 x 21 W T5) / 700 x 950 x 65 mm



37598 Light mirror
can be combined with cast mineral washbasin, with vertical illumination and horizontal washbasin illumination
Illumination/Dimensions (w x h x d): (2 x 21 W T5 and 2 x 21 W T5) / 700 x 950 x 50 mm



37547 Side cabinet
front with glass jalousie
Features:
• 1 vertically adjustable glass shelf
• 3 electric sockets
• As desired also available with colour light illumination (LED) and control unit
Dimensions (w x h x d): 800 x 711 x 350 mm



37549 Side cabinet
front with glass jalousie
Features:
• 1 vertically adjustable glass shelf
• 3 electric sockets
• Fully extractable drawer and closure cushioning
• As desired also available with colour light illumination (LED) and control unit
Dimensions (w x h x d): 800 x 911 x 350 mm

white
(RAL 9010)

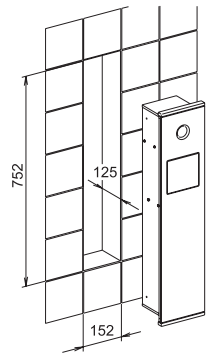
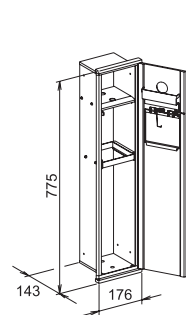
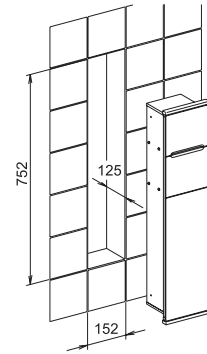
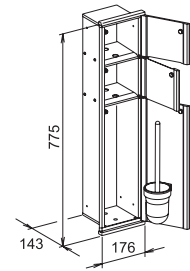
aluminium silver
(RAL 9006)

surface
chrome-plated

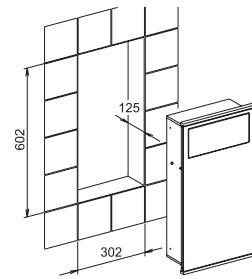
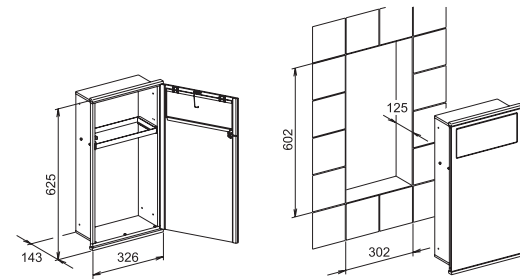
surface aluminium silver anodized (E6 EV1)
or aluminium finish



**44964
Module WC 1**
consisting of:
• Toilet brush holder
• Toilet roll holder
• Spare toilet roll compartment



**44988
Module Washstand 1**
consisting of:
• Waste bin



**07749
Crystal mirror**
for wall or corner
installation
Dimensions (w x h):
220 x 800 mm



**10095
Crystal mirror**
Dimensions (w x h):
350 x 850 mm
430 x 1050 mm
550 x 850 mm
550 x 1050 mm

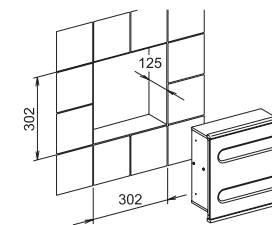
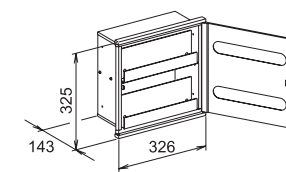


**44976
Module WC 2**
consisting of:
• Sanitary bag dispenser
(including the first pack
of hygiene bags)
• Sanitary waste bin

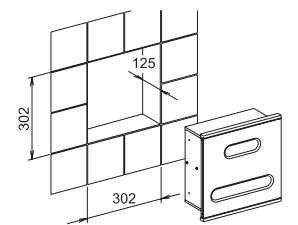
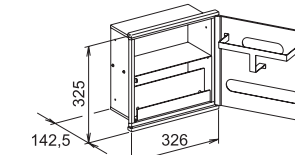
Product Overview



**44985
Module Washstand 2**
consisting of:
• 2 paper towel dispensers
(each for max. 150 paper towels)



**44977
Module Washstand 3**
consisting of:
• Kleenex box
(for max. 150 tissues)
• Paper towel dispenser
(for max. 150 paper towels)



surface
chrome-plated

SMART



32306
Angle bar 90°
may be used on the left
or right
370/670 mm



32312
Hand shower sliding rail
complete with shower bracket
870, 970 mm



32301
Grab rail
for horizontal or vertical installation
370, 470, 570, 670, 770, 870, 970, 1070 mm



02301
Bath towel rail
453, 653, 853 mm

02303
Bath towel rail
double, 653 mm



02318
Towel holder
two arms, swivelling
Projection: 430 mm

02314
Towel hook



02315
Towel hook
double



Product Overview



34962
Toilet paper holder
for mounting on an angle bar



02307
Grab rail
250 mm



02309
Grab rail with soap basket
may be used on the left or right
324 mm



32302
**Pivoted supported rail for wash basin
and wc**
to vertical position movable
Projection: 600/700/850 mm



32304
Supporting rail for wash basin and wc
firmly fastened
Projection: 600/700 mm



02364
Toilet brush set
complete with synthetic insert
and brush



02360
Toilet paper holder
with lid
for 100/120 mm wide paper rolls



02362
Toilet paper holder
open form,
for 100/120 mm wide paper rolls



02363
Spare paper holder



02321
Towel ring



Combination example, consisting of:
02351 | Double holder
02753 | Lotion dispenser opaque synthetic with pump
02350 | Crystal or acrylic glass tumbler



Combination example, consisting of:
02351 | Double holder
02355 | Crystal or acrylic glass dish
02350 | Crystal or acrylic glass tumbler



11657
Sponge basket for corner installation
 with removable insert,
 in white or anthracite



24901
Soap wire basket
 132 x 100 x 28 mm



24903
Soap wire basket for corner installation
 Side length: 127 mm
 180 x 115 x 28 mm



11658
Sponge basket
 with removable insert,
 in white or anthracite



24902
Sponge basket
 200 x 100 x 28 mm



24904
Sponge basket for corner installation
 Side length: 170 mm
 240 x 170 x 50 mm

Product Overview



02355
Soap holder
 complete with crystal or acrylic glass dish



02350
Tumbler holder
 complete with crystal or acrylic glass tumbler



02352
Lotion dispenser
 opaque synthetic matt,
 complete with holder and pump
 Capacity: approx. 160 ml



24941
Soap wire basket
 removable, with concealed fastening screws
 132 x 105 x 28 mm



24942
Soap wire basket
 removable, with concealed fastening screws
 132 x 114 x 28 mm



24944
Soap wire basket for corner installation
 removable, with concealed fastening screws
 Side length: 186 mm
 264 x 180 x 47 mm



24943
Soap wire basket for corner installation
 removable, with concealed fastening screws
 Side length: 140 mm
 197 x 133 x 28 mm



24942
Sponge wire basket
 removable, with concealed fastening screws
 200 x 114 x 70 mm



24944
Sponge basket for corner installation
 removable, with concealed fastening screws
 Side length: 186 mm
 260 x 180 x 72 mm

You can also visit us online at www.keuco.de.