



V.401



PARQUET CATALOGUE

turn

INDEX

The Company

How Veneers are made

Technical Notes

Contacts

PRODUCTS

Natural Dyed Veneers

Multilaminar Wood Veneers

Parquet and Parete Tabu

Edgebandings

Tabu Collection

Colours and tones may vary depending on the screen used, and particularly on colour balancing, saturation, brightness

Chromatic result is indicative
Reproduction from varnished samples

For a good fidelity level with the original colours, we suggest to adjust your screen with [this page](#)

THE COMPANY

TABU has been operating in this sector since 1927, with its headquarters in Cantù (Como). The offices, plant and storage areas are scattered over a 70.000 m2 area, of which 40.000 is covered.

Parquet production is carried out in the relevant establishment at Desio (Milan).

Tabu specialises in producing natural wood veneers, through-dyed wood veneers in a huge range of colours , sliced and solid multilaminar wood in both inlaid or traditional structures, wood edgebands, floor boards and deckings .

By using Tabu products the designer can create designs using real wood whilst harmonising the colour range according to his own taste. As furniture has developed, the need for colour and shape co-ordination has emerged. Designers now have materials at their disposal which allow co-ordination of all the elements allowing them to obtain a perfect synthesis of shape, colour and space.

PARQUET



It is commonly thought that a parquet floor must be of a certain thickness, traditionally using a certain kind of wood, and laid by gluing or nailing on the surface to be covered. This takes a long time to lay due to following the various technical times. TABU produces “CALEIDOSYSTEM”, ready-made in multilaminar wood, which respects the environment; this is a product manufactured and varnished at the factory which has better features than a traditional parquet (hardness, swelling, stability and so on) with the advantage of a better finish (it is made using high technology machines), and can be speedily laid if it is to be glued, and even more quickly if it is laid floating. In this case the parquet is placed on a synthetic bed which acts as a shock-absorber as well as thermal insulation, with only the boards being glued to one another. It feels softer to walk on and conserves heat. It can be laid on new screed, old floors and old carpeting. Maintenance is simple; it is cleaned with normal detergent and polished with ordinary wax. Many colours and figures are available to simplify matching the various colours of the furnishing.

TABU makes “CALEIDOMASS” in the same figures and colours in solid multilaminar wood. The laying technique is by traditional gluing.

PARQUET



CALEIDOSYSTEM 20-40

Prefinished parquet made with multilaminar-wood (M.W.) dyed all through the thickness. It can be laid with a full glueing system or with floating system.

CALEIDOMASS 80-99

Solid flooring planks of multilaminar-wood (M.W.) dyed all through the thickness. To be installed with full glueing system.

TECHNICAL DATA

LACQUER (Caleidosystem 20-40 only)

Gloss: 35-40

Chemical resistance: (1-10) Alcohol 10, Stripers 8, Turpentine 10, Chemical rinse 10, Water 10, Acids 0, Fire 0, Temperature +70° -5°C.

Colourfast test: (Test Weather Ometer Atlas 25WR, ISO Standard 2809 20H)
Dark colours 4-5, Medium colours 4, Light colours 3

Surface hardness: 4H

DENSITY: ISO 3131 = 720-964 Kg/m³

DIMENSIONAL STABILITIES: (23°C RH 90/95 15days/ 23°C RH 35/40 15days)

Radial stability 0,3-0,4% Length stability 0,01-0,02%

HARDNESS TEST: UNI 4712 = 0,06-0,09

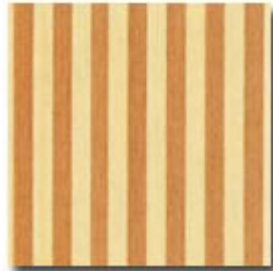
BRINELL: UNI 560-75 between 4,5 to 5,4 (according to model)

THICKNESSES: Wood Layer (according to model): 2-10 mm (nominal) Planks: 8-16 mm LENGTHS: 600-1500 mm WIDTHS: 80-120 mm

PARQUET



TABU Z9.008



TABU Z9.011



TABU Z9.014



TABU Z9.015



TABU Z9.018



TABU Z9.019



TABU Z9.023



TABU Z9.027



TABU Z9.037



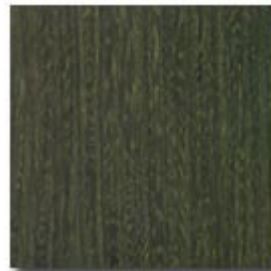
TABU Z9.038



TABU Z9.041



TABU Z9.043



TABU Z9.045



TABU Z9.046



TABU Z9.049

PARQUET



TABU Z9.051



TABU Z9.052



TABU Z9.065



TABU Z9.084



TABU Z9.100



TABU Z9.101



TABU Z9.430



TABU Z9.544



TABU Z9.610



TABU Z9.801



TABU Z9.803



TABU Z9.805



TABU Z9.806



TABU Z9.808



TABU Z9.812

PARQUET



TABU Z9.813



TABU Z9.814



TABU Z9.816



TABU Z9.817



TABU Z9.818



TABU Z9.819



TABU Z9.821



TABU Z9.823



TABU Z9.824



TABU Z9.827

PARETE TABU

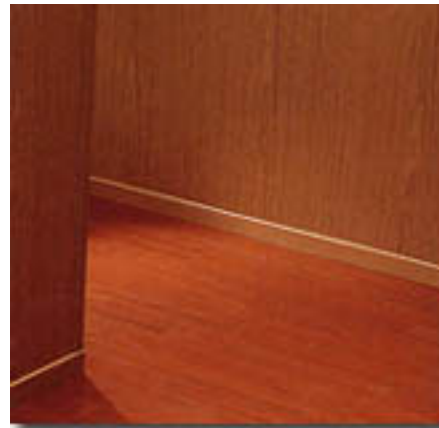


PARETE TABU is a system of wall covering panels varnished and ready to be installed with invisible joints.

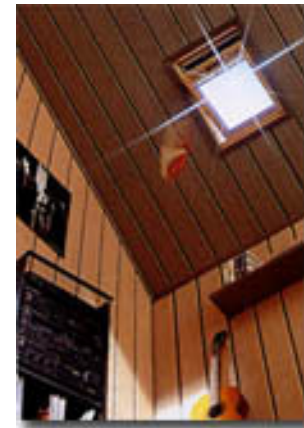
Parete Tabu is made of MDF panels, veneered, grooved and varnished (gloss 40- 50) It is easily installed on flush walls or on wooden bars. Joints are invisible thanks to particular aluminium bars and wooden mouldings (the system is patented).

The system is completed by skirtings and Caleidoriv wall deckings, in the same colour selection.

SKIRTING



CALEIDORIV



THICKNESS: Veneer: 0,6 mm (nominal) Panel:9 mm HEIGHT: 3000 mm WIDHT: 600 mm

PARETE TABU



TABU 2B01S115



TABU 2B04075



TABU 2B52046



TABU 2B52058



TABU 2B52059



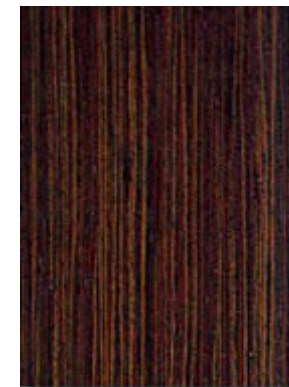
TABU 2B52088



TABU 2E00420



TABU 2E00430



TABU 2E07532



TABU 2E13123

PARETE TABU



TABU 2E13535



TABU 2E26083



TABU 2E26085



TABU 2EZ1101



TABU 2EZ1102



TABU 2EZ9041



TABU 2EZ9047



TABU 2EZ9049



TABU 2EZ9065



TABU 2EZ9814



CONTACTS

TABU S.p.A.
Via Rencati, 110
22063 Cantù (COMO)
ITALY

Tel: (+39) 031714493

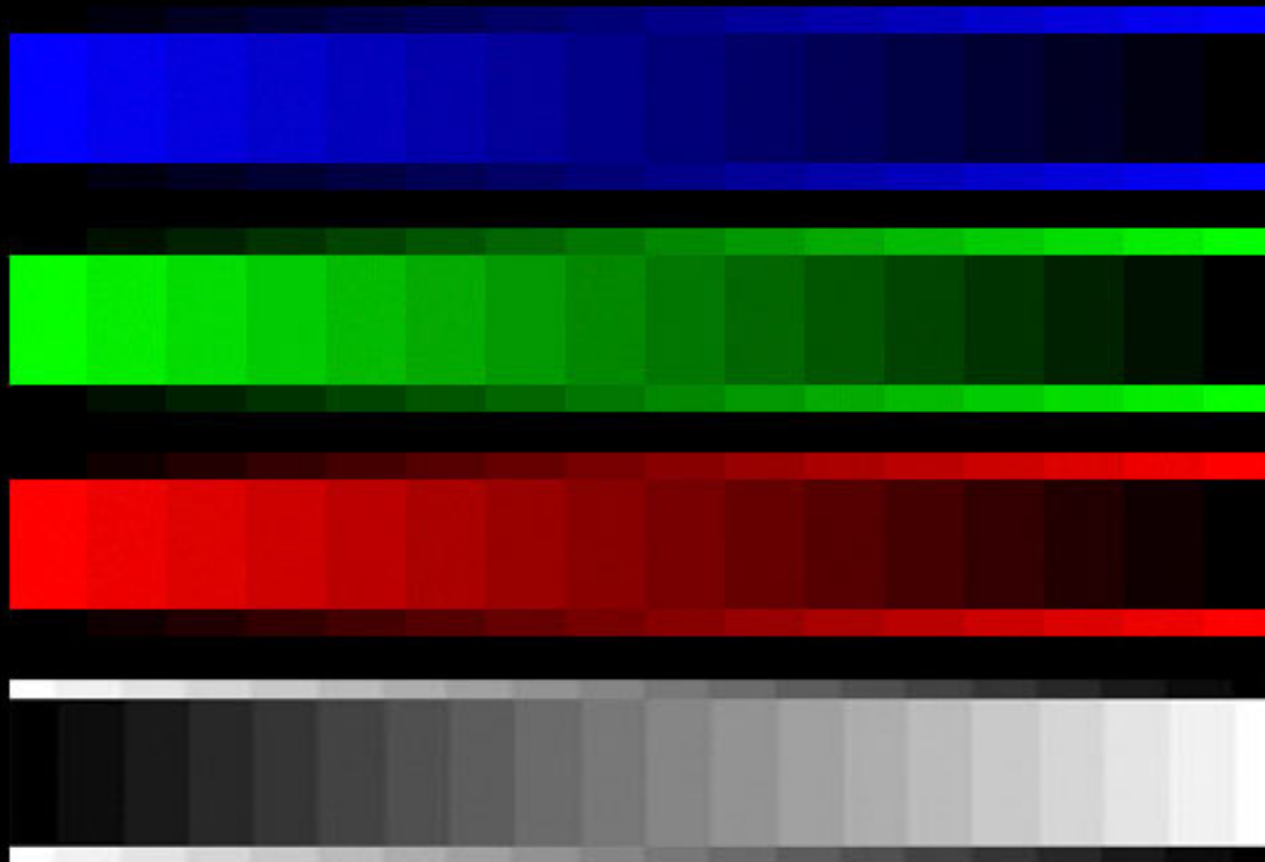
Fax: (+39) 031711988

WebSite: **www.tabu.it**

email: **info@tabu.it**

PUBLISHED BY TABU SpA – All rights reserved

Photos, codes and colours of wood species belong to Tabu S.p.A. Reproduction is prohibited..



For a correct shade balancing, screen colour temperature shouldn't be less than 9000°K (best 9300 °K).

Adjust Brightness, Contrast, Saturation, using the upper bars.

Red, Green, Blue channels and the Greys scale must be properly adjusted with all the shades from the darkest to the lightest.

If such gradation scales are not visible, adjust screed values at the best, till separations between shades are constant and distinguishable.

[BACK TO INDEX](#)