

We assume a guarantee – according to our manufacturer guarantee statement – of 5 years for our products, provided that it can be demonstrated that the product was purchased and mounted through a franchised specialist craftsman. The guarantee period begins on the date of delivery from our factory. The statutory warranty period is contained in the guarantee period. Electronic components and lighting articles are omitted from this guarantee statement.

Even the most advanced printing technology cannot fully reproduce the exceptional finish and subtle colour schemes of our products. Only original KEUCO products can provide you with the optimum impression. These are on display in stores which supply bathroom fittings.

No part of this brochure may be reprinted or duplicated, even in part, without our explicit consent and without specification of the source manufacturer.
KEUCO GmbH & Co. KG,
Postfach 1365, D-58653 Hemer

We accept no liability for changes resulting from technical advances and necessary modifications of design and colour, nor from printing errors.

Our products are exclusively available through wholesalers for bathroom fittings.

Concept, text, design,
and lithography:
Kontrast Communication
Services GmbH, Düsseldorf
Setting/product photography:
Studio CASA, Münster
Printing:
Meinders & Elstermann
GmbH & Co. KG,
Belm (Osnabrück)
Printed on GALAXI Keramik.
Supplied by the Papier Union.

MIRROR CABINETS AND MIRRORS

TABLE OF CONTENTS	3
FOREWORD	4 - 5
MIRROR CABINETS	6 - 41
ROYAL MODULAR	8 - 11
ROYAL INTEGRAL	12 - 15
ELEGANCE	16 - 17
EDITION 300	18 - 19
EDITION Palais	20 - 21
PLAN	22 - 23
ROYAL PLUS	24 - 25
ROYAL T3	26 - 27
ROYAL T2	28 - 29

Table of Contents

ROYAL 35	30 - 31
ROYAL 30	32 - 33
ATLANTA	34 - 35
ROYAL 10	36 - 37
ROYAL T1	38 - 39
KEUCO LX	40 - 41
LIGHTS AND MIRRORS	42 - 51
PRODUCT OVERVIEW	52 - 79

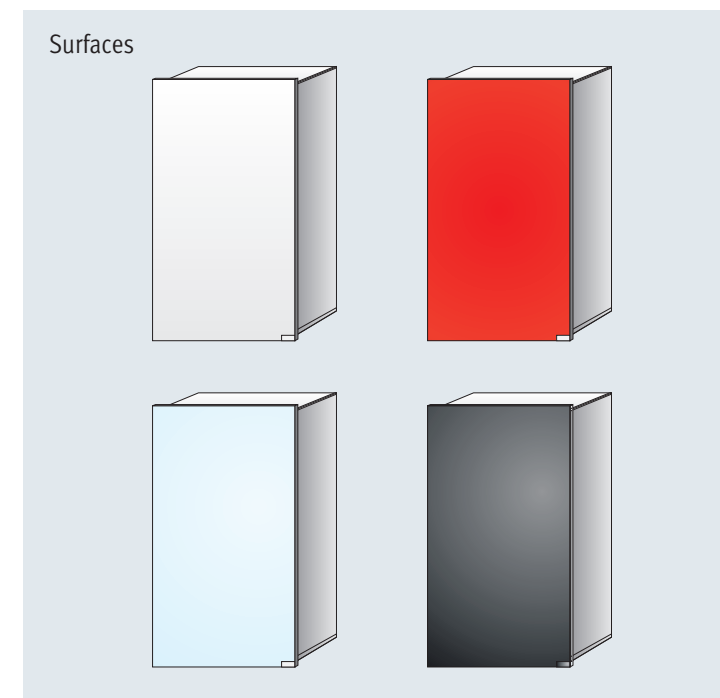
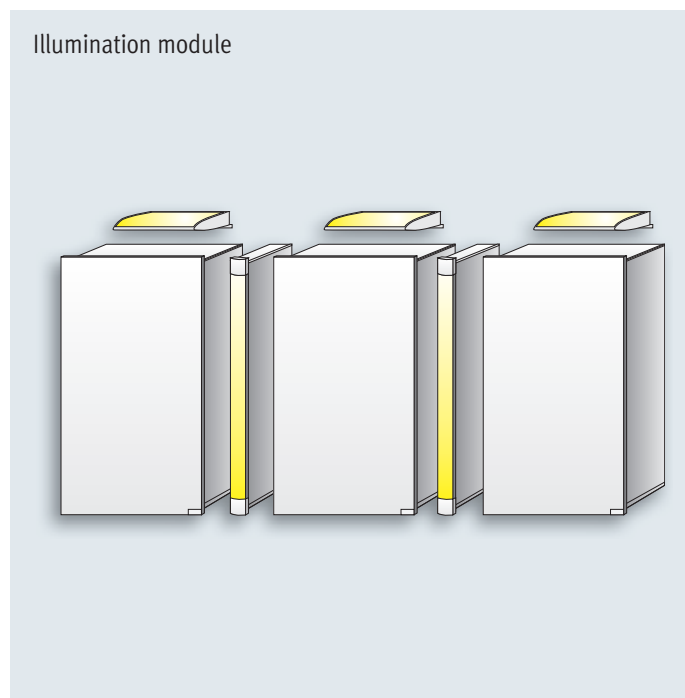
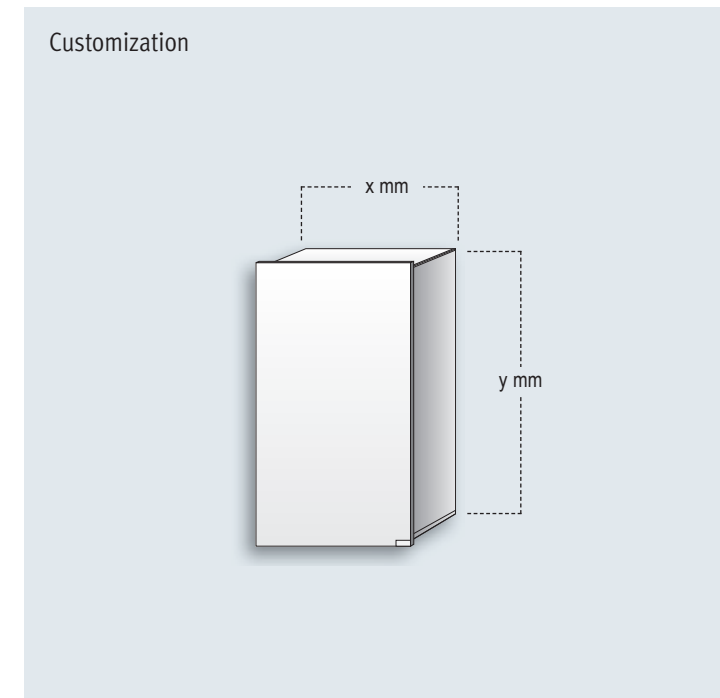
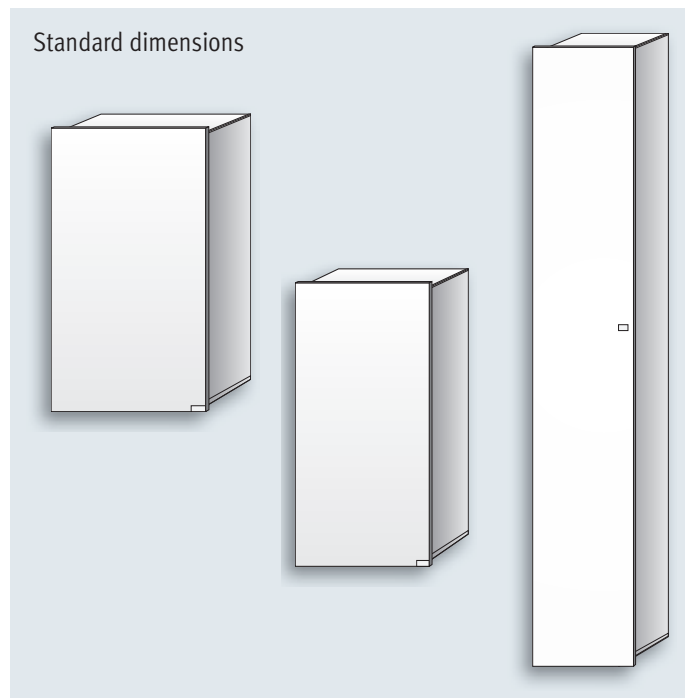
“Trend-setting innovations, premium design, long-lasting quality – that is what KEUCO, the brand for the bathroom, stands for. As a German brand manufacturer, we have been established worldwide for many years. From the ideal to the idea, from the idea to the innovation – KEUCO unites beauty in the bathroom with uncompromising functionality. Our products are in a class of their own. Their main characteristics are outstanding quality and longevity, excellent ergonomic features, innovative technology and exciting designs. That is why many of our products have been distinguished with renowned design prizes, among others also with the coveted red dot: ‘best of the best’. KEUCO – our passion for your personal well-being in the bathroom.”

Hartmut Dalheimer, Managing Director/Engelbert Himrich, Managing Partner





Mirror cabinets



ROYAL MODULAR is the sovereign of a combination of possibilities. Choose from a wide range of designs and tailor-made sizes, mirroring and lacquered crystal glass, and numerous illumination modules. Use two, three or as many modules as you like: Be creative, because a genuine dream bathroom can't be bought off the shelf.

Product overview, see pages 52 – 53

Size overview, see page 75



With the versatile modular system from ROYAL MODULAR, you can create your own perfect mirror cabinet – on the left, for example, an ensemble consisting of centre module, two side basis modules and two T5 lighting modules. The modules are available in various widths and with a height of 70 or 100 cm as desired. They are suitable for non-recessed and recessed wall mounting.

Product overview, see pages 52 – 53

Size overview, see page 75



The high level of quality and the excellent workmanship of ROYAL INTEGRAL make it remarkable in every detail – for example the softly closing doors. ROYAL INTEGRAL is framed by a surrounding chrome strip which is available in two widths to adapt to different installation situations.



Product overview, see pages 54 – 55

Size overview, see page 75





On the inside of its aluminium body ROYAL INTEGRAL offers an amazing amount of flexibility. Thanks to innovative technology, the glass shelves can be flexibly arranged on the slotted rear wall to make room for larger objects. In addition there are integrated functional details like electric sockets and the optionally available RDS radio with touch sensors.

Product overview, see pages 54 – 55

Size overview, see page 75





Its inner value isn't the only reason why the mirror cabinet shines. Right: The chrome-plated light shade illuminates the glass shelves and the reflective inner surfaces of the doors and the rear surface. Above the drawers, there is space for small items, a radio and two electric sockets are integrated. The radio has a glass operating panel with touch sensors as well as a digital clock. Even external audio sources such as an MP3 player can be connected.

Product overview, see page 56

Size overview, see page 75





The lift up doors on EDITION 300 mirror cabinets open upwards, giving a practical and elegant appearance. The mirrored surface is in one piece, so the effect is very generous. The elegant illumination with the mirror cabinets of EDITION 300 don't just ensure a distinctive overall appearance, but also perfect, glare free vision. Inside, the freely positionable glass shelves provide ample room for both flat and tall bathroom utensils. The sideways sliding interior mirror even provides an unimpeded view of the face when the lift up door is open. Indirect washbasin illumination is contained within in the aluminium body which has mirror surfaces on the sides.

Product overview, see page 59

Size overview, see page 75





EDITION Palais combines gently flowing forms with clear geometry – the contour of the mirror cabinet is a perfect example. The mirror, with its striking illuminated oval, can be slid sideways and offers an unimpeded view of an interior that widens the scope for flexible arrangements: for example at the bottom with the optional RDS radio which can be integrated as shelf (see picture below). The mirror cabinets are available for recessed or non-recessed installation. Mirrored sides are also a feature of this cabinet.

Product overview, see pages 62 – 63

Size overview, see page 75





The clear, independent forms of the PLAN collection are testament to the fascination they evoke, decade after decade, and already count themselves among the design classics of the modern bathroom. A choice is available for the body: it is available in aluminium, chrome-plated, stainless steel look and with mirrors on the sides. You will be impressed by the typically well-designed KEUCO storage concept inside.

Product overview, see page 64

Size overview, see page 75





Mirrors, mirrors and more mirrors: With the ROYAL PLUS collection, the materials make their big debut. Not even handles break the overall planar impression of the crystal mirror doors. The handles are placed underneath. Matt white, glass halogen spotlights provide bright, soft light. The aluminium body has mirrors on the sides. ROYAL PLUS is available in various sizes with two, three or four doors. This way it will fit in any bathroom.

Product overview, see pages 66 – 67

Size overview, see page 75





With ROYAL T3, it is your turn to be the lighting director. A clever illumination system is concealed in the minimalist, elegant exterior and brings every bathroom discreetly to life. Three light switches and a dimmer can be found inside. And now it's time for action: take one, for ...

Product overview, see page 68

Size overview, see page 75

... Makeup lighting

Perfect makeup begins with perfect lighting – which is not an unwelcome thing for shaving too. The two vertical tubes illuminate the face gently and brightly without creating shadows.



... Atmospheric lighting

Wellness while having a bath: the dimmable wellness light shines upwards and creates an atmosphere for relaxed day-dreaming.



... Orientation lighting

During a trip to the bathroom during the night, sleep shouldn't be banished completely from your eyes by the bright ceiling lights. The emergency light switches on automatically when the light dims – with energy-saving, high quality LED technology.





ROYAL T2 is the perfect mirror cabinet for two. Because, it offers two of everything that one could ever desire: two polished crystal mirror doors, two electric sockets, two side lights and if desired, two interior drawers. Even the side lights have two uses: With the door open they also illuminate the contents of the mirror cabinet.



Product overview, see page 68

Size overview, see page 75



Walls extend right up to ceiling – so why not make use of this space? With heights of up to 84 centimetres, ROYAL 35 is one of the most spacious mirror cabinets in the KEUCO assortment. It is available in various sizes and as two or three door model. Above each of the doors there is an elegant light shade which serves both as washbasin illumination and as ceiling floodlight. It goes without saying that ROYAL 35 is also generously fitted on the inside.

Product overview, see page 69

Size overview, see page 75



The characteristic full mirroring makes it unmistakable: the KEUCO design classic, ROYAL 30. The mirror cabinets come in various widths and with up to four doors, so they are suitable for every wash area. That gives you the freedom to get on with your planning. And if you would like even more mirrors in the bathroom, ROYAL 30 is also available as tall unit.

Product overview, see pages 70 – 72

Size overview, see page 75





Corner mirror cabinets from the ATLANTA series don't just generate space optically. They also offer a great deal of space inside. With the integrated cosmetic mirror and the generous illumination they are perfect for makeup accessories, for example. If the model of 99 centimetres displayed here isn't sufficient for all the flacons, bottles and brushes, simply select the extra-large size which is also designed for wall mounting and has a height clearance of 160 centimetres.

Product overview, see page 73

Size overview, see page 75





The ROYAL 10 is the entry level model in the KEUCO mirror cabinet family. Since nobody likes to do without comfort, we have furnished ROYAL 10 with dignified features just like its bigger colleagues. Three vertically adjustable glass shelves, illumination, electric socket and light switch are also included. And if you want to establish an effective accent in the bathroom, you can also choose the indirect, upward pointing illumination.

Product overview, see page 73

Size overview, see page 75



The ROYAL T1's revolving door with mirrors on both sides is equipped with translucent rectangles along its upper edge – this innovative solution elegantly combines strong interior illumination with soft exterior lighting. Also inside: three freely positionable glass shelves, and an interior shaver socket.

Product overview, see page 72

Size overview, see page 75



Character and the ability to transform are not considered opposites with KEUCO LX. Both the glass jalousie and the body are available in materials and colours which can be freely combined – if desired even with a special finish of your favourite colour. The glass of the jalousie has a very special lustre because of the lacquer on the underside.

Product overview, see page 74



Lights and mirrors



ELEGANCE light mirrors provide both soft facial illumination and indirect room lighting – also separately switchable. They can be combined with colour fluorescent tubes to create atmospheric wellness light. ELEGANCE light mirrors adapt with ease to any bathroom condition thanks to the various sizes: from large size for the double wash-basin, to small models for the guest bathroom.

Product overview, see page 57





The round light mirror of EDITION 300 provides soft, indirect light. It can be combined either with a free standing washbasin mixer or, as shown on the left, with a matching integrated wall fitting. On the right are the equivalents in the minimalist design typical of the collection from the PLAN product family. As addition, the BELLA VISTA cosmetic mirror ensures the best view for makeup and shaving – it is unmatched with its exclusive lighting technology and distortion free optics.

Product overview, see page 76



If you prefer another lighting solution, the previously shown EDITION 300 round mirror is also available without illumination. The EDITION Palais light mirror, which can be seen on the right, is characterised by the flowing contour and the illuminated oval. The surrounding indirect lighting generates atmosphere. Here, too, the BELLA VISTA cosmetic mirror fits in as harmonious addition.






Product overview, see page 76



Light from all sides: Both models displayed here come from EDITION 300 and have each four fluorescent tubes concealed under the chrome-plated frame. They illuminate your entire face perfectly without any glare. Right: EDITION 300 politely makes room in the guest bathroom – this is how it demonstrates genuine hospitality.

Product overview, see page 76

Hinge door surfaces

-  Double crystal glass mirror
-  Red crystal glass, reflective interior
-  Black crystal glass, reflective interior
-  White crystal glass, reflective interior
-  Width according to custom finishing



Centre module
 1 revolving door
 as desired, opening on right or left
 for recessed or non-recessed mounting
 Body: aluminium, silver anodized
 Features:
 • Electric unit (as desired with electric socket and light switch or only with electric socket)
 • 2 vertically adjustable glass shelves
 • Attachment of a maximum 3 light modules
 Dimensions (w x h x d):
 • Non-recessed mounting 400 x 700/1000 x 170 mm
 • Recessed mounting 400 x 700/1000 x 160 mm

Centre module
 1 revolving door
 as desired, opening on right or left
 for recessed or non-recessed mounting
 Body: aluminium, silver anodized
 Features:
 • Electric unit (as desired with electric socket and light switch or only with electric socket)
 • 2 vertically adjustable glass shelves
 • Attachment of a maximum 3 light modules
 Dimensions (w x h x d):
 • Non-recessed mounting 500 x 700/1000 x 170 mm
 • Recessed mounting 500 x 700/1000 x 160 mm

Centre module
 1 revolving door
 as desired, opening on right or left
 for recessed or non-recessed mounting
 Body: aluminium, silver anodized
 Features:
 • Electric unit (as desired with electric socket and light switch or only with electric socket)
 • 2 vertically adjustable glass shelves
 • Attachment of a maximum 3 light modules
 Dimensions (w x h x d):
 • Non-recessed mounting 600 x 700/1000 x 170 mm
 • Recessed mounting 600 x 700/1000 x 160 mm

Basis module
 1 revolving door
 as desired, opening on right or left
 for recessed or non-recessed mounting
 Body: aluminium, silver anodized
 Features:
 • 3 vertically adjustable glass shelves
 Dimensions (w x h x d):
 • Non-recessed mounting 200 x 700/1000 x 170 mm
 • Recessed mounting 200 x 700/1000 x 160 mm

Basis module
 1 revolving door
 as desired, opening on right or left
 for recessed or non-recessed mounting
 Body: aluminium, silver anodized
 Features:
 • 3 vertically adjustable glass shelves
 Dimensions (w x h x d):
 • Non-recessed mounting 300 x 700/1000 x 170 mm
 • Recessed mounting 300 x 700/1000 x 160 mm

Basis module
 1 revolving door
 as desired, opening on right or left
 for recessed or non-recessed mounting
 Body: aluminium, silver anodized
 Features:
 • 6 vertically adjustable glass shelves
 Dimensions (w x h x d):
 • Non-recessed mounting 300 x 1600 x 170 mm
 • Recessed mounting 300 x 1600 x 160 mm



Product Overview

Lighting module T5
 as desired for recessed or non-recessed mounting,
 for mounting on the side of a centre or basis module
 (minimum 1 centre module with pull switch is
 necessary)
 Lighting:
 • Fluorescent lamp (1 x 14 W T5)
 Dimensions (w x h x d):
 • Non-recessed mounting 50 x 700 x 175 mm
 • Recessed mounting 50 x 700 x 105 mm



All modules are available for recessed or non-recessed wall mounting. For recessed mounting, a depth of 150 mm is necessary. The door closes to the left but can be changed on location.

Attention: For recessed mounting, please enquire with your installation technician regarding the correct measurements for the opening in the wall or plan this at www.royal-modular.de online.



Lighting module halogen
 as desired for recessed or non-recessed mounting, for mounting
 on a centre or basis module 300 mm wide or more (minimum 1
 centre module with pull switch is necessary)
 Lighting:
 • Halogen illumination (2 x 20 W)
 Dimensions (w x h x d):
 • Non-recessed mounting 250 x 50 x 106 mm
 • Recessed mounting 250 x 50 x 106 mm



Basis module
 1 revolving door
 as desired, opening on right or left
 for recessed or non-recessed mounting
 Body: aluminium, silver anodized
 Features:
 • 3 vertically adjustable glass shelves
 Dimensions (w x h x d):
 • Non-recessed mounting 400 x 700/1000 x 170 mm
 • Recessed mounting 400 x 700/1000 x 160 mm

Basis module
 1 revolving door
 as desired, opening on right or left
 for recessed or non-recessed mounting
 Body: aluminium, silver anodized
 Features:
 • 3 vertically adjustable glass shelves
 Dimensions (w x h x d):
 • Non-recessed mounting 500 x 700/1000 x 170 mm
 • Recessed mounting 500 x 700/1000 x 160 mm

Basis module
 1 revolving door
 as desired, opening on right or left
 for recessed or non-recessed mounting
 Body: aluminium, silver anodized
 Features:
 • 3 vertically adjustable glass shelves
 Dimensions (w x h x d):
 • Non-recessed mounting 600 x 700/1000 x 170 mm
 • Recessed mounting 600 x 700/1000 x 160 mm

Basis module
 1 revolving door
 as desired, opening on right or left
 for recessed or non-recessed mounting
 Body: aluminium, silver anodized
 Features:
 • 6 vertically adjustable glass shelves
 Dimensions (w x h x d):
 • Non-recessed mounting 400 x 1600 x 170 mm
 • Recessed mounting 400 x 1600 x 160 mm

Mirror cabinet

for recessed wall mounting
1 hinged door, optional opening either to the right or left, without illumination, optional with 8.5 or 15 mm wide covering strip

Body:
aluminium, silver anodized

Features:

- 2 x 2 or glass shelves
- 2 electric sockets

Dimensions (w x h x d):

448/461 x 698/ 711 x 170 mm

448/461 x 998/1011 x 170 mm



Mirror cabinet

for recessed wall mounting
2 hinged doors, optional with 8.5 or 15 mm wide covering strip

Lighting:
fluorescent lamps (2 x 24 W T5)

Body:
aluminium, silver anodized

Features:

- 2 x 3 variably adjustable glass shelves
- 2 electric sockets
- 1 interior light switch
- optional with integrated RDS radio*

Dimensions (w x h x d):

898/ 911 x 698/711 x 170 mm

1198/1211 x 698/711 x 170 mm



Product Overview

Mirror cabinet

for recessed wall mounting
1 hinged door, optional opening either to the right or left optional with 8.5 or 15 mm wide covering strip

Lighting:
fluorescent lamps (2 x 14/2 x 21 W T5), optional also without illumination

Body:
aluminium, silver anodized

Features:

- 2 x 2 or 2 x 3 variably adjustable glass shelves
- 2 electric sockets
- 1 interior light switch

Dimensions (w x h x d):

598/611 x 698/ 711 x 170 mm

598/611 x 998/1011 x 170 mm



Mirror cabinet

for recessed wall mounting
2 hinged doors, optional with 8.5 or 15 mm wide covering strip

Lighting:
fluorescent lamps (4 x 24 W T5)

Body:
aluminium, silver anodized

Features:

- 2 x 4 variably adjustable glass shelves
- 3 electric sockets
- 2 interior light switches
- optional with integrated RDS radio*

Dimensions (w x h x d):

1498/1511 x 698/711 x 170 mm





Mirror cabinet
 1 revolving door
 optional, handing right or left
 Lighting: Halogen illumination (2 x 20 W)
 Body: aluminium, silver anodized
 Features:
 • Rear wall mirror
 • Mirrors on the side
 • 1 exterior light switch
 • 2 interior electric sockets
 • 3 vertically adjustable glass shelves
 • optional with 1 interior drawer
 Dimensions (w x h x d): 500 x 760 x 169 mm



Mirror cabinet
 2 revolving doors
 Lighting: Halogen illumination (4 x 20 W)
 Body: aluminium, silver anodized
 Features:
 • Rear wall mirror
 • Mirrors on the side
 • 1 exterior light switch
 • 2 interior electric sockets
 • 3 vertically adjustable glass shelves
 • optional with 2 interior drawers
 • optional with integrated RDS radio
 Dimensions (w x h x d): 700 x 760 x 169 mm



Crystal mirror
 with all round faced cut
 Dimensions (w x h):
 360 x 635 mm
 700 x 750 mm
 950 x 635 mm



Light mirror
 horizontal illumination, mirrored front panel, both task lighting and moodlight, switched separately with concealed switches
 fluorescent lamps
 Illumination/dimensions (w x h x d):
 (2 x 14 W T5)/700 x 820 x 66 mm
 (2 x 21 W T5)/950 x 705 x 66 mm



Light mirror
 horizontal illumination, mirrored front panel, both task lighting and moodlight, switched separately with concealed switches, fluorescent lamps (1 x 24 W)
 Dimensions (w x h x d): 360 x 705 x 66 mm

Product Overview



Mirror cabinet
 2 revolving doors
 Lighting: Halogen illumination (4 x 20 W)
 Body: aluminium, silver anodized
 Features:
 • Rear wall mirror
 • Mirrors on the side
 • 1 exterior light switch
 • 2 interior electric sockets
 • 3 vertically adjustable glass shelves
 • optional with 2 interior drawers
 • optional with integrated RDS radio
 Dimensions (w x h x d): 950 x 670 x 169 mm



Mirror cabinet
 3 revolving doors
 Lighting: Halogen illumination (6 x 20 W)
 Body: aluminium, silver anodized
 Features:
 • Rear wall mirror
 • Mirrors on the side
 • 1 exterior light switch
 • 2 interior electric sockets
 • 6 vertically adjustable glass shelves
 • optional with 2 interior drawers
 • optional with integrated RDS radio
 Dimensions (w x h x d): 1200 x 670 x 169 mm



Wall light
 optional for horizontal or vertical installation, mirrored front panel, both task lighting and moodlight, switched separately via room switch
 fluorescent lamps
 Illumination/dimensions (w x h x d):
 (2 x 14 W T5)/70 x 700 x 66 mm
 (2 x 21 W T5)/70 x 950 x 66 mm

Light mirror
 vertical illumination, mirrored front panel, both task lighting and moodlight, switched separately with concealed switches
 fluorescent lamps (4 x 14 W T5)
 Dimensions (w x h x d):
 700 x 635 x 66 mm
 950 x 635 x 66 mm



Light mirror
with lighting on all sides, fluorescent lamps
Illumination/dimensions (w x h x d):
(2 x 14 W T5 and 2 x 21 W T5)/ 950 x 650 x 65 mm
(2 x 14 W T5 and 2 x 28 W T5)/1250 x 650 x 65 mm



Light mirror
with vertical lighting, fluorescent lamps (2 x 14 W T5)
Dimensions (w x h x d): 525 x 960 x 46 mm



Light mirror
with lighting on all sides, fluorescent lamps (4 x 14 W T5)
Dimensions (w x h x d): 650 x 650 x 65 mm



Crystal mirror
Dimensions (w x h):
650 x 650 mm
950 x 650 mm
1250 x 650 mm

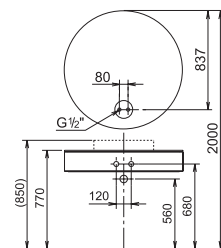


Crystal mirror
Dimensions (w x h):
525 x 960 mm

Product Overview



Crystal mirror
with bevelled edge
Ø 950 mm

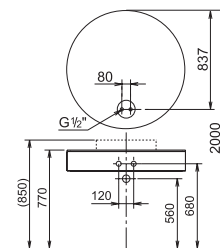


Crystal mirror
with bevelled edge,
with base and sealing kit for on wall fitting
Ø 950 mm



Light mirror
with bevelled edge,
PL illumination (2 x 36 W)
Ø 950 mm

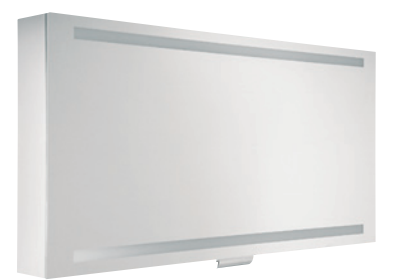
Light mirror
with bevelled edge, PL illumination (2 x 36 W),
with base and sealing kit for on wall fitting
Ø 950 mm



Mirror cabinet
1 lift up door
Body: aluminium, silver anodized
Lighting:
• Fluorescent lamps (2 x 14 W T5)
Features:
• Mirrors on the sides
• 1 light switch (on the outside)
• 2 interior electric sockets
• 1 exterior electric socket
• 1 adjustable interior mirror (200 x 520 mm)
• 5 variably adjustable glass shelves
Dimensions (w x h x d): 650 x 650 x 160 mm



Mirror cabinet
1 lift up door
Body: aluminium, silver anodized
Lighting:
• Fluorescent lamps (2 x 21 W T5)
Features:
• Mirrors on the sides
• 1 light switch (on the outside)
• 2 interior electric sockets
• 1 exterior electric socket
• 1 adjustable interior mirror (200 x 520 mm)
• 5 variably adjustable glass shelves
Dimensions (w x h x d): 950 x 650 x 160 mm



Mirror cabinet
1 lift up door
Body: aluminium, silver anodized
Lighting:
• Fluorescent lamps (2 x 28 W T5)
Features:
• Mirrors on the sides
• 1 light switch (on the outside)
• 2 interior electric sockets
• 1 exterior electric socket
• 1 adjustable interior mirror (200 x 520 mm)
• 7 variably adjustable glass shelves
Dimensions (w x h x d): 1250 x 650 x 160 mm



Mirror cabinet

- 1 lift up door
- Body: aluminium, silver anodized
- Lighting:
 - PL illumination (2 x 24 W)
- Features:
 - Rear wall mirror
 - Interior illumination
 - 2 electric sockets
 - 1 light switch
 - 4 vertically adjustable glass shelves
 - 1 pivoting mirror
 - 1 tumbler holder
 - 1 magnetic holder
- Dimensions (w x h x d): 800 x 780 x 177 mm



Mirror cabinet

- 1 lift up door
- Body: aluminium, silver anodized
- Lighting:
 - PL illumination (2 x 36 W)
- Features:
 - Rear wall mirror
 - Interior illumination
 - 2 electric sockets
 - 1 light switch
 - 4 vertically adjustable glass shelves
 - 1 pivoting mirror
 - 1 tumbler holder
 - 1 magnetic holder
- Dimensions (w x h x d): 1000 x 780 x 177 mm

Product Overview



Mirror cabinet

- 2 revolving doors
- Body: aluminium, silver anodized
- Lighting:
 - PL illumination (2 x 24 W)
- Features:
 - Rear wall mirror
 - Interior illumination
 - 2 electric sockets
 - 1 light switch
 - 4 vertically adjustable glass shelves
 - 1 pivoting mirror
 - 1 tumbler holder
 - 1 magnetic holder
- Dimensions (w x h x d): 800 x 780 x 177 mm



Mirror cabinet

- 2 revolving doors
- Body: aluminium, silver anodized
- Lighting:
 - PL illumination (2 x 36 W)
- Features:
 - Rear wall mirror
 - Interior illumination
 - 2 electric sockets
 - 1 light switch
 - 4 vertically adjustable glass shelves
 - 1 pivoting mirror
 - 1 tumbler holder
 - 1 magnetic holder
- Dimensions (w x h x d): 1000 x 780 x 177 mm



Crystal mirror
Dimensions (w x h):
430 x 1050 mm
550 x 1050 mm

Mirror cabinet

1 sliding door
as desired, for non-recessed or recessed wall mounting,
mirrors on the sides (only with the non-recessed variation)

Body: aluminium, silver anodized

Surrounding illumination:

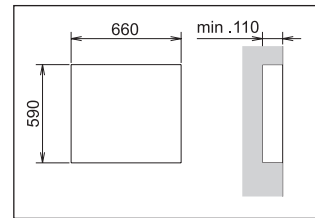
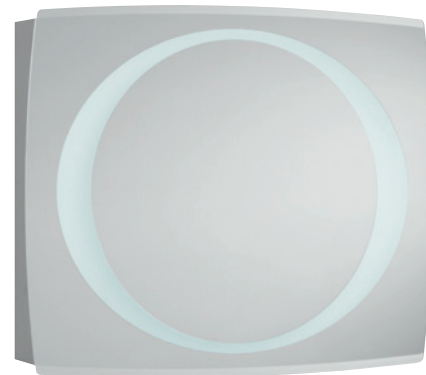
- 1 x 60 W

Features:

- 1 exterior light switch
- 1 exterior electric socket (only with the non-recessed variation)
- 2 interior electric sockets
- 6 variably adjustable glass shelves
- As desired with integrated RDS radio (only with the non-recessed variation)

Dimensions (w x h x d): 740 x 630 x 191 mm

Slides 275 mm



Light mirror

with bevelled horizontal edges,
illuminated with fluorescent lamp on all sides,

1 x 60 watt (socket 2GX13)

Dimensions (w x h x d): 740 x 630 x 60 mm



Light mirror

with bevelled horizontal edges,
illuminated with fluorescent lamp on all sides,

1 x 60 watt (socket 2GX13)

Dimensions (w x h x d): 990 x 630 x 60 mm



Product Overview

Mirror cabinet

1 sliding door
as desired, for non-recessed or recessed wall mounting,
mirrors on the sides (only with the non-recessed variation)

Body: aluminium, silver anodized

Surrounding illumination:

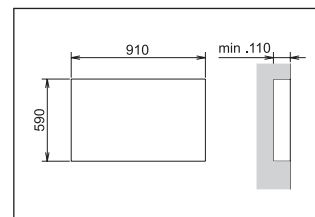
- 1 x 60 W

Features:

- 1 exterior light switch
- 1 exterior electric socket (only with the non-recessed variation)
- 2 interior electric sockets
- 6 variably adjustable glass shelves
- As desired with integrated RDS radio (only with the non-recessed variation)

Dimensions (w x h x d): 990 x 630 x 191 mm

Slides 400 mm



Crystal mirror

with bevelled horizontal edges

Dimensions (w x h x d):

740 x 630 x 6 mm

990 x 630 x 6 mm





Mirror cabinet
 2 revolving doors
 Body: aluminium
 Body surfaces:
 • chrome-plated, stainless steel finish, silver anodized
 Lighting:
 • Fluorescent lamps
 Features:
 • 1 light switch
 • 3 vertically adjustable glass shelves
 • 2 electric sockets
 • Mirrors on the sides
 Illumination/dimensions (w x h x d):
 (2 x 24 W)/650 x 800 x 137 mm
 (2 x 39 W)/950 x 800 x 137 mm



Crystal mirror
 for wall or corner installation
 Dimensions (w x h): 220 x 800 mm



Crystal mirror
 Dimensions (w x h):
 350 x 850 mm
 430 x 1050 mm
 550 x 850 mm
 550 x 1050 mm

Product Overview



Light mirror
 set in surrounding metal frame,
 concealed light switch at bottom,
 with fluorescent lamps
 Illumination/dimensions (w x h x d):
 (2 x 8 W)/400 x 800 x 56 mm
 (2 x 24 W)/650 x 800 x 56 mm
 (2 x 39 W)/950 x 800 x 56 mm



Light mirror
 may be combined with washbasin sets 1 to 4,
 with integrated sensor switch,
 as desired also available with surrounding
 night illumination, fluorescent lamps
 (2 x 14 W T5 and 2 x 21 W T5)
 Dimensions (w x h x d): 700 x 950 x 65 mm



Light mirror
 may be combined with cast mineral washbasin,
 light switch at bottom right,
 with vertical illumination and horizontal
 washbasin illumination
 (2 x 21 W T5 and 2 x 8 W T5)
 Dimensions (w x h x d): 700 x 950 x 50 mm



ROYAL PLUS
 2 revolving doors
 Lighting:
 • Halogen illumination (2 x 20 W)
 Body: aluminium, silver anodized
 Features:
 • Mirrors on the sides
 • 1 light switch
 • 2 electric sockets
 • 2 x 3 vertically adjustable glass shelves
 Dimensions (w x h x d): 600 x 910 x 143 mm



ROYAL PLUS
 2 revolving doors
 Lighting:
 • Halogen illumination (2 x 20 W)
 Body: aluminium, silver anodized
 Features:
 • Mirrors on the sides
 • 1 light switch
 • 2 electric sockets
 • 2 x 3 vertically adjustable glass shelves
 Dimensions (w x h x d): 600 x 810 x 143 mm



ROYAL PLUS
 2 revolving doors
 Lighting:
 • Halogen illumination (2 x 20 W)
 Body: aluminium, silver anodized
 Features:
 • Mirrors on the sides
 • 1 light switch
 • 2 electric sockets
 • 2 x 2 vertically adjustable glass shelves
 Dimensions (w x h x d): 800 x 710 x 143 mm



ROYAL PLUS
 2 revolving doors
 Lighting:
 • Halogen illumination (2 x 20 W)
 Body: aluminium, silver anodized
 Features:
 • Mirrors on the sides
 • 1 light switch
 • 2 electric sockets
 • 2 x 3 vertically adjustable glass shelves
 Dimensions (w x h x d): 800 x 810 x 143 mm

Product Overview



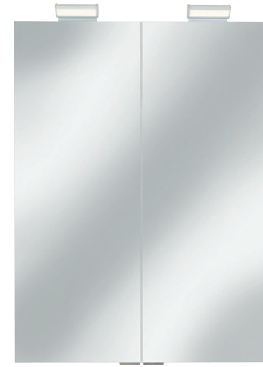
ROYAL PLUS
 3 revolving doors
 Lighting:
 • Halogen illumination (3 x 20 W)
 Body: aluminium, silver anodized
 Features:
 • Mirrors on the sides
 • 1 light switch
 • 2 electric sockets
 • 3 x 3 vertically adjustable glass shelves
 Dimensions (w x h x d): 1000 x 810 x 143 mm



ROYAL PLUS
 3 revolving doors
 Lighting:
 • Halogen illumination (3 x 20 W)
 Body: aluminium, silver anodized
 Features:
 • Mirrors on the sides
 • 1 light switch
 • 2 electric sockets
 • 3 x 3 vertically adjustable glass shelves
 Dimensions (w x h x d): 1300 x 810 x 143 mm



ROYAL PLUS
 4 revolving doors
 Lighting:
 • Halogen illumination (4 x 20 W)
 Body: aluminium, silver anodized
 Features:
 • Mirrors on the sides
 • 1 light switch
 • 4 electric sockets
 • 4 x 3 vertically adjustable glass shelves
 Dimensions (w x h x d): 1600 x 810 x 143 mm



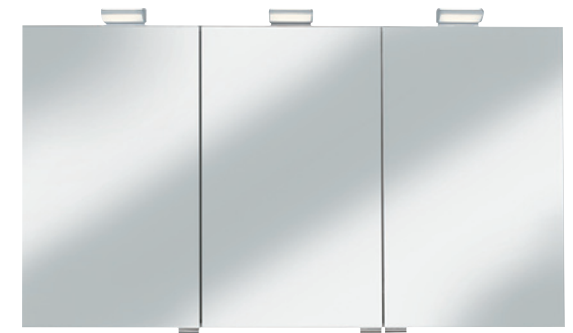
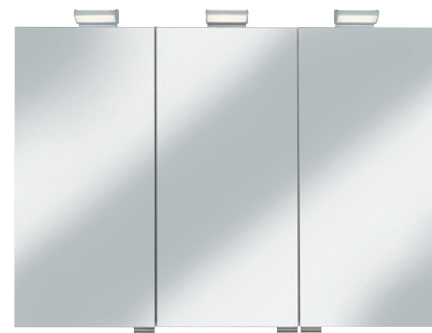
ROYAL T3
 3 revolving doors
 as desired with/without external drawer
 Lighting:
 • Atmospheric light (PL illumination 2 x 24 W)
 • Cosmetic light (Fluorescent lamps 2 x 14 W)
 • Night light (LED 1 x 6 W)
 Body: aluminium, silver anodized
 Features:
 • Rear wall mirror
 • Mirrors on the side
 • Interior lighting
 • 3 light switches (for all variations of lighting)
 • 1 dimmer (for atmospheric light)
 • 2 electric sockets
 • 3 x 3 vertically adjustable glass shelves
 • 1 tumbler
 • 2 universal trays
 Dimensions (w x h x d): 906 x 700 x 177 mm

ROYAL T3
 3 revolving doors
 as desired with/without external drawer
 Lighting:
 • Atmospheric light (PL illumination 2 x 36 W)
 • Cosmetic light (Fluorescent lamps 2 x 14 W)
 • Night light (LED 1 x 6 W)
 Body: aluminium, silver anodized
 Features:
 • Rear wall mirror
 • Mirrors on the side
 • Interior lighting
 • 3 light switches (for all variations of lighting)
 • 1 dimmer (for atmospheric light)
 • 2 electric sockets
 • 3 x 3 vertically adjustable glass shelves
 • 1 tumbler
 • 2 universal trays
 Dimensions (w x h x d): 1006 x 700 x 177 mm

ROYAL 35
 2 revolving doors
 as desired with/without 2 integrated drawers
 Lighting:
 • Halogen lighting (2 x 35 W)
 Body: aluminium, silver anodized
 Features:
 • Mirrors on the sides
 • 1 light switch
 • 2 electric sockets
 • 3 vertically adjustable glass shelves
 • 1 universal tray
 • 1 tumbler
 • 2 shelf trays
 • optional with integrated RDS radio
 Dimensions (w x h x d): 600 x 800 x 145 mm

ROYAL 35
 2 revolving doors
 as desired with/without 2 integrated drawers
 Lighting:
 • Halogen lighting (2 x 35 W)
 Body: aluminium, silver anodized
 Features:
 • Mirrors on the sides
 • 1 light switch
 • 2 electric sockets
 • 3 vertically adjustable glass shelves
 • 1 universal tray
 • 1 tumbler
 • 2 shelf trays
 • optional with integrated RDS radio
 Dimensions (w x h x d): 800 x 740 x 150 mm

Product Overview



ROYAL T2
 2 revolving doors
 as desired with/without 2 integrated drawers
 Lighting:
 • Fluorescent lamps (2 x 14 W)
 Body: aluminium, silver anodized
 Features:
 • 1 light switch
 • 2 electric sockets
 • 3 vertically adjustable glass shelves
 • 1 universal tray
 • 1 tumbler
 • 2 shelf trays
 • optional with integrated RDS radio
 Dimensions (w x h x d): 700 x 700 x 166 mm

ROYAL T2
 2 revolving doors
 as desired with/without 2 integrated drawers
 Lighting:
 • Fluorescent lamps (2 x 14 W)
 Body: aluminium, silver anodized
 Features:
 • 1 light switch
 • 2 electric sockets
 • 3 vertically adjustable glass shelves
 • 1 universal tray
 • 1 tumbler
 • 2 shelf trays
 • optional with integrated RDS radio
 Dimensions (w x h x d): 900 x 700 x 166 mm

ROYAL 35
 3 revolving doors
 as desired with/without 2 integrated drawers
 Lighting:
 • Halogen lighting (3 x 35 W)
 Body: aluminium, silver anodized
 Features:
 • Mirrors on the sides
 • 1 light switch
 • 2 electric sockets
 • 2 x 3 vertically adjustable glass shelves
 • 1 universal tray
 • 1 tumbler
 • 2 shelf trays
 • optional with integrated RDS radio
 Dimensions (w x h x d): 1000 x 740 x 150 mm

ROYAL 35
 3 revolving doors
 as desired with/without 2 integrated drawers
 Lighting:
 • Halogen lighting (3 x 35 W)
 Body: aluminium, silver anodized
 Features:
 • Mirrors on the sides
 • 1 light switch
 • 2 electric sockets
 • 2 x 3 vertically adjustable glass shelves
 • 1 universal tray
 • 1 tumbler
 • 2 shelf trays
 • optional with integrated RDS radio
 Dimensions (w x h x d): 1300 x 740 x 150 mm



ROYAL 30
 2 revolving doors
 Lighting:
 • Halogen illumination (2 x 20 W)
 • Light shades matt white
 Body: aluminium, silver anodized
 Features:
 • 1 light switch
 • 2 electric sockets
 • 2 x 3 vertically adjustable glass shelves
 Dimensions (w x h x d): 600 x 885 x 143 mm

ROYAL 30
 2 revolving doors
 Lighting:
 • Halogen illumination (2 x 20 W)
 • Light shades matt white
 Body: aluminium, silver anodized
 Features:
 • 1 light switch
 • 2 electric sockets
 • 2 x 2 vertically adjustable glass shelves
 Dimensions (w x h x d): 800 x 685 x 143 mm

ROYAL 30
 3 revolving doors
 Lighting:
 • Halogen illumination (3 x 20 W)
 • Light shades matt white
 Body: aluminium, silver anodized
 Features:
 • 1 light switch
 • 2 electric sockets
 • 3 x 3 vertically adjustable glass shelves
 Dimensions (w x h x d): 1000 x 785 x 143 mm

ROYAL 30 wall cabinet
 1 revolving door
 as desired, opening on right or left
 Body: aluminium, silver anodized
 Features:
 • Mirrors on the sides
 • 3 vertically adjustable glass shelves
 Dimensions (w x h x d): 350 x 600 x 143 mm

ROYAL 30 wall cabinet
 1 revolving door
 as desired, opening on right or left
 Body: aluminium, silver anodized
 Features:
 • Mirrors on the sides
 • 3 vertically adjustable glass shelves
 Dimensions (w x h x d): 350 x 700 x 143 mm

ROYAL 30 wall cabinet
 1 revolving door
 as desired, opening on right or left
 Body: aluminium, silver anodized
 Features:
 • Mirrors on the sides
 • 3 vertically adjustable glass shelves
 Dimensions (w x h x d): 350 x 800 x 143 mm

Product Overview



ROYAL 30
 2 revolving doors, without lighting
 Body: aluminium, silver anodized
 Features:
 • Mirrors on the sides
 • 2 x 3 vertically adjustable glass shelves
 or
 • Mirrors on the sides
 • 2 x 3 vertically adjustable glass shelves
 • 1 electric socket
 Dimensions (w x h x d): 600 x 800 x 143 mm

ROYAL 30
 3 revolving doors
 Lighting:
 • Halogen illumination (3 x 20 W)
 • Light shades matt white
 Body: aluminium, silver anodized
 Features:
 • 1 light switch
 • 2 electric sockets
 • 2 x 3 vertically adjustable glass shelves
 Dimensions (w x h x d): 1300 x 785 x 143 mm

ROYAL 30
 4 revolving doors
 Lighting:
 • Halogen illumination (4 x 20 W)
 • Light shades matt white
 Body: aluminium, silver anodized
 Features:
 • 2 light switches
 • 4 electric sockets
 • 4 x 3 vertically adjustable glass shelves
 Dimensions (w x h x d): 1600 x 785 x 143 mm

ROYAL 30 tall cabinet
 1 revolving door
 as desired, opening on right or left
 Body: aluminium, silver anodized
 Features:
 • Mirrors on the sides
 • 6 vertically adjustable glass shelves
 Dimensions (w x h x d): 350 x 1600 x 143 mm



ROYAL 30 tall cabinet
 1 revolving door
 as desired, opening on right or left
 Body: aluminium, silver anodized
 Features:
 • Mirrors on the sides
 • 6 vertically adjustable glass shelves
 Dimensions (w x h x d): 350 x 1600 x 250 mm



ATLANTA mirror cabinet for corner installation
 1 revolving door
 Body: aluminium, silver anodized
 Features:
 • 5 glass shelves
 Dimensions (w x h x d): 440 x 1600 x 220 mm
 Side length: 320 mm



ATLANTA mirror cabinet for corner installation
 1 revolving door
 Lighting:
 • halogen illumination (2 x 20 W)
 • light shades matt white
 Body: aluminium, silver anodized
 Features:
 • 1 light switch
 • 1 electric socket
 • 3 glass shelves
 • 1 cosmetic mirror
 Dimensions (w x h x d): 440 x 990 x 235 mm
 Side length: 320 mm



Product Overview



ROYAL T1 IP 44
 1 revolving door
 as desired opening on right or left
 Lighting:
 • Fluorescent lamp (1 x 36 W)
 Body: aluminium, silver anodized
 Features:
 • 1 pull switch
 • 1 shaver socket
 • 3 vertically adjustable glass shelves
 Dimensions (w x h x d):
 505 x 700 x 143 mm
 505 x 800 x 143 mm



ROYAL 10
 2 revolving doors
 Lighting:
 • Fluorescent lamp (14 W)
 • as desired with/without additional ceiling light
 Body: aluminium, silver anodized
 Features:
 • 1 light switch
 • 1 electric socket
 • 3 vertically adjustable glass shelves
 Dimensions (w x h x d): 600 x 700 x 141 mm

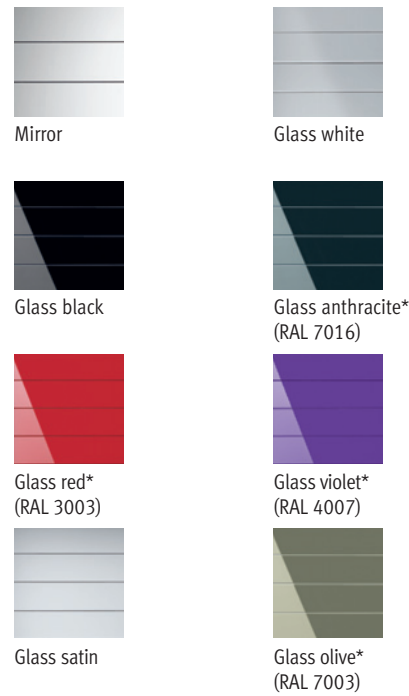


ROYAL 10
 3 revolving doors
 Lighting:
 • Fluorescent lamp (21 W)
 • as desired with/without additional ceiling light
 Body: aluminium, silver anodized
 Features:
 • 1 light switch
 • 1 electric socket
 • 2 x 3 vertically adjustable glass shelves
 Dimensions (w x h x d): 900 x 700 x 141 mm

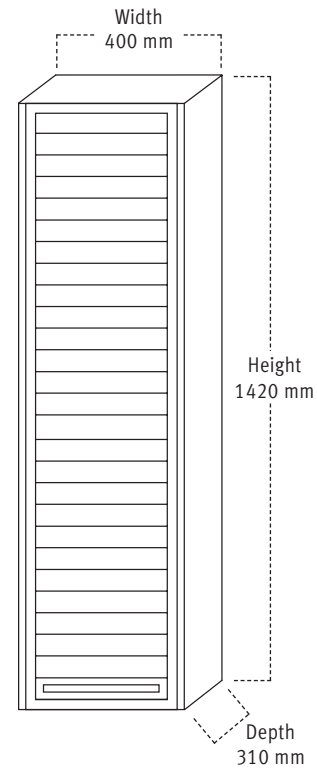
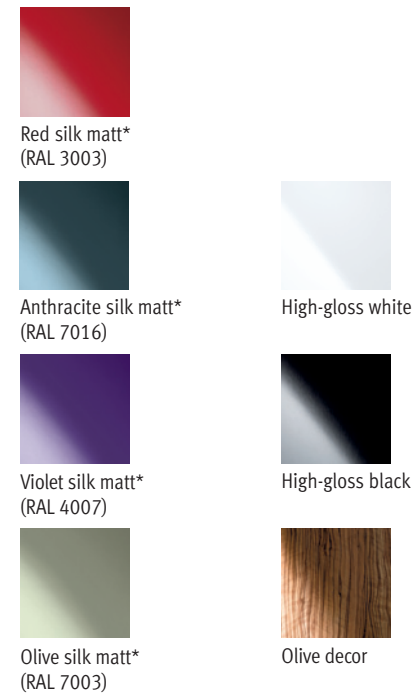
KEUCO LX

Various models, various dimensions: an overview of KEUCO mirror cabinets.
The following table supplies an overview of which mirror cabinet is available in which format.

Front



Carcass



Mirror Cabinets	Width in mm	200	300	350	400	448	500	598	650	700	740	800	898	900	940	950	1000	1198	1200	1250	1498	1600	
ROYAL MODULAR*		1	1		1		1																
ROYAL INTEGRAL						1		1					2						2			2	
ELEGANCE							1			2						2				3			
EDITION 300										1						1					1		
EDITION 200													1 2									1 2	
EDITION Palais											1					1							
PLAN										2												2	

Number of doors

*also available in custom sizes

Product Overview

Wall unit KEUCO LX

Front with glass jalousie, chrome-plated running profile and handle, interior, top, and bottom surfaces in anthracite

- 4 vertically adjustable glass shelves
- Rear wall mirror

Dimensions (w x h x d): 400 x 1420 x 310 mm



Wall unit KEUCO LX

Custom finish in a RAL colour

Front with glass jalousie, chrome-plated running profile and handle, interior, top, and bottom surfaces in anthracite

Surface design:

Carcass: silk matt lacquer

Front: glass jalousie, with rear lacquering

Features:

- 4 vertically adjustable glass shelves
- Rear wall mirror

Dimensions (w x h x d): 400 x 1420 x 310 mm

Note: With this custom finish, the requested colour will be applied both to the carcass and to the front. Please enquire separately if you would like to have the carcass and the front in different colours.

More information about the KEUCO COLORBOARDS can be found in the separate brochure or on the internet under www.keuco.de

Mirror Cabinets	Width in mm	200	300	350	400	440	500	600	640	650	700	740	800	850	900	940	950	1000	1100	1250	1300	1600
ROYAL PLUS								2					2					3			3	4
ROYAL T3															3				3			
ROYAL T2											2				2							
ROYAL 35													2					3			3	
ROYAL 30				1									2					3			3	4
ATLANTA						1																
ROYAL 10																3						
ROYAL T1																3						

Number of doors

Light mirrors

Light mirror EDITION 300
with lighting on all sides, fluorescent lamps (4 x 14 W T5)
Dimensions (w x h x d): 650 x 650 x 65 mm



Light mirror EDITION 300
with vertical lighting, fluorescent lamps (2 x 14 W T5)
Dimensions (w x h x d): 525 x 960 x 46 mm



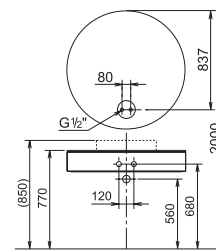
Light mirror EDITION 300
with lighting on all sides, fluorescent lamps
Illumination/dimensions (w x h x d):
(2 x 14 W T5 and 2 x 21 W T5)/ 950 x 650 x 65 mm
(2 x 14 W T5 and 2 x 28 W T5)/1250 x 650 x 65 mm



Light mirror EDITION 300
with bevelled edge,
PL illumination (2 x 36 W)
Ø 950 mm



Light mirror EDITION 300
with bevelled edge, PL illumination (2 x 36 W),
with base and sealing kit for on wall fitting
Ø 950 mm



Light mirror PLAN
may be combined with
washbasin sets 1 to 4,
with integrated sensor switch,
as desired also available with
surrounding night illumination,
fluorescent lamps
(2 x 14 W T5 and 2 x 21 W T5)
Dimensions (w x h x d):
700 x 950 x 65 mm



Light mirror PLAN
may be combined with cast
mineral wash-basin,
light switch at bottom right,
with vertical illumination and
horizontal
wash-basin illumination
(2 x 21 W T5 and 2 x 8 W T5)
Dimensions (w x h x d):
700 x 950 x 50 mm



Light mirror ELEGANCE
horizontal illumination, mirrored front panel,
both task lighting and moodlight, switched
separately with concealed switches,
fluorescent lamps
Illumination/dimensions (w x h x d):
(2 x 14 W T5)/700 x 820 x 66 mm
(2 x 21 W T5)/950 x 705 x 66 mm



Light mirror ELEGANCE
vertical illumination, mirrored front panel,
both task lighting and moodlight, switched
separately with concealed switches,
fluorescent lamps (4 x 14 W T5)
Dimensions (w x h x d):
700 x 635 x 66 mm
950 x 635 x 66 mm



Product Overview



Light mirror EDITION 100
with attached mirror light
(1 x 60 W E14)
Dimensions (w x h):
350 x 947 mm
550 x 947 mm
750 x 947 mm



Light mirror EDITION 100
with pivoting wing right or left
(1 x 60 W E14)
Dimensions (w x h):
785 x 947 mm



Light mirror EDITION 100
with pivoting wing right and left
(1 x 60 W E14)
Dimensions (w x h):
1020 x 947 mm

Light mirror EDITION Palais
with bevelled horizontal edges,
illuminated with fluorescent lamp on all sides,
1 x 60 watt (socket 2GX13)
Dimensions (w x h x d):
740 x 630 x 60 mm
990 x 630 x 60 mm



Light mirror PLAN
set in surrounding metal frame,
concealed light switch at bottom,
with fluorescent lamps
Illumination/dimensions (w x h x d):
(2 x 8 W)/400 x 800 x 56 mm
(2 x 24 W)/650 x 800 x 56 mm
(2 x 24 W)/950 x 800 x 56 mm

Light mirror JOLY
as desired with/without
decor element and crystal glass shelf,
with halogen illumination (2 x 35 W)
Dimensions (w x h x d): 400 x 840 x 150 mm



Light mirror AMARO
with all round facet cut,
and halogen illumination (2 x 25 W)
Dimensions (w x h x d): 370 x 782 x 130 mm

Light mirror JOLY
as desired with/without
decor element and crystal glass shelf,
with halogen illumination (2 x 35 W)
Dimensions (w x h x d): 400 x 830 x 150 mm



Light mirror VISIT
as desired with/without 2 drawers on the sides,
with rear glass illumination,
fluorescent lamps (2 x 13 W T5)
Dimensions (w x h x d): 320 x 960 x 41 mm

Light mirror JOLY
as desired with/without
decor element and crystal glass shelf,
with halogen illumination (2 x 35 W)
Dimensions (w x h x d): 400 x 840 x 150 mm





Crystal mirror CANNES
with facet cut and polished edges
Dimensions (w x h):
400 x 600 mm
500 x 800 mm



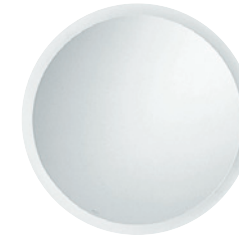
Crystal mirror LUXOR
with lateral facet cut
Dimensions (w x h):
370 x 800 mm
600 x 800 mm



Crystal mirror PLAN
for wall or corner installation
Dimensions (w x h):
220 x 800 mm



Crystal mirror AMARO
with decorative cut in front
Dimensions (w x h):
450 x 800 mm
650 x 800 mm



Crystal mirror GRENOBLE
with facet cut and polished edges
Ø 400 mm
Ø 600 mm



Crystal mirror EDITION Palais
with bevelled horizontal edges
Dimensions (w x h x d):
740 x 630 x 6 mm
990 x 630 x 6 mm

Product Overview



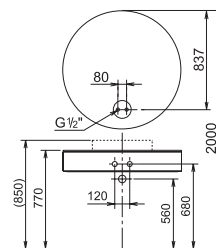
Crystal mirror EDITION 100/EDITION 200/EDITION 300
with all round facet cut
Dimensions (w x h):
350 x 850 mm
430 x 1050 mm
550 x 850 mm
550 x 1050 mm
525 x 960 mm



Crystal mirror EDITION 300
with bevelled edge
Ø 950 mm



Crystal mirror EDITION 300
with bevelled edge,
with base and sealing kit for on wall fitting
Ø 950 mm



Crystal mirror EDITION 300
with all round facet cut
Dimensions (w x h):
650 x 650 mm
950 x 650 mm
1250 x 650 mm



Crystal mirror
with all round faced cut
Dimensions (w x h):
360 x 635 mm
700 x 750 mm
950 x 635 mm

Crystal mirror SOLO
with facet cut and polished edges
Dimensions (w x h):
450 x 800 mm
650 x 900 mm



Crystal mirror SABRINA
with facet cut
Dimensions (w x h):
450 x 600 mm
600 x 800 mm

