



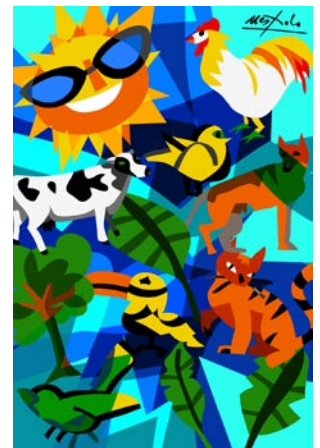
AVELLINO UGO NESPOLO CHARACTERIZES
THE SQUARE OF THE HOSPITAL COMPLEX
“CITTÀ OSPEDALIERA DI AVELLINO”
WITH DRAWINGS REALIZED ON 24 SHEETS
IN DIGITAL PRINT BY ABET LAMINATI

The square, heart of the new impressive hospital complex 'Città Ospedaliera Di Avellino', is characterised by huge drawings by Ugo Nespolo, realized in digital print on 24 panels MEG, produced by ABET LAMINATI. The high walls of the circular square, developed by the studio TD&Z in Lecce, are covered with the ornamental drawings by Ugo Nespolo.

He created brilliant and coloured décor for the hospital. At first Nespolo had thought to use images linked to the hospital environment but then he realised that it was better to follow the underlying theme of its entire work: the celebration of life.

The covering of the complex has been a real challenge for the designers because of seismic-structural and architectonic reasons. The idea consists in a concave glass lens, with the curved surface facing upward, detached from the facades with a central opening-impluvium. The structure is made of varnished white steel with shaped spikes, net-like bearing timbers, secondary frame made up of concentric rings with stainless-steel “spiders” which support stratified glass sheets; the rigorous monochrome of this structure is broken by the décor ABET LAMINATI on MEG panels.

Decorated with digital print, MEG turns into a multicoloured palette, thus becoming a work of art. The décor created by Ugo Nespolo are unique and they are an integral part of the square. The quality of the panels by Nespolo is an extra value inside the hospital, able to increase the attraction of the place and to show a great symbiosis between the architectonic container and its artistic content.



MEG

MEG is a self-supporting high pressure laminate (HPL) with a decorative surface that is suitable for exteriors.

